

VAN ISLE 360°
INTERNATIONAL YACHT RACE

20 YEARS! 1999 - 2019
JUNE 1 - 15, 2019

A FOURTEEN DAY RACE AROUND VANCOUVER ISLAND

PHOTO BY CLINT SPVORT
PHOTO BY LINDA YORRULAN

VANISLE360.COM

Inside is information on application requirements for skippers, crew and boats, community information for all 9 ports of the race.

Race Office
(250) 324-8886
Vanisle360.com@gmail.com



2019 Race Planner and Draft Schedule of events

(As of February 4, 2019)

Welcome to the Van Isle 360, we have prepared this document to assist you in planning for the race. We do our best to keep it updated on the website. Once we know which boats are entering, we send the skippers, and their Road Crew designate updates as we are made aware of changes. So as of the date above, the following is information for each leg of the race including start and finish lines, moorage facilities and shore side activities. Please refer to host city information on the race website for additional community information on facilities available at each stop. <http://www.vanisle360.com/resources-2/shore-support/> As always, the Sailing Instructions will take precedent over any on water descriptions that occur in this document.

The Van Isle 360 occurs every two years on the odd year, usually early in June. The race is based on the ebb tides through Seymour Narrows, near Campbell River, that provides the optimal start time in Deep Bay, just north of the Narrows. Everything runs forwards or backwards from this planning point.

Important dates and entry information

July 1st, 2018

- The Notice of Race is posted
- Applications for Entry are available on the website
- Applications will be reviewed by the Organising Authority (OA) for skipper and watch captain experience, completion of qualifying races, ORC GPH rating/PHRF-NW and vessel stability. If a skipper or watch captain does not have the necessary qualifying races completed, it may be possible to complete the races in the spring of the year of the race. Other offshore races not listed as a qualifying race may be accepted at the sole discretion of the OA. Include the information in your application for entry.
- If a skipper does not have the necessary experience, they must outline their plan to obtain the experience in the application for entry.
- The entry fee must be submitted with the application.
- A valid rating certificate for the 2018 year must be included with the application
- A digital picture of the yacht must be e-mailed to vanisle360.com@gmail.com
- The picture must clearly show the hull and sail numbers of the boat. The purpose of the picture is to provide search and rescue authorities with a visual of the yacht if required.



November 30th, 2018

- Skippers will be notified of their acceptance into the race.
- Cheques or money orders will be cashed upon notification of acceptance.
- A list of accepted competitors will be published on the race website

Crew Qualification and Suitability

- The Van Isle 360 is not a race for novice sailors. You, your crew and your boat shall be well prepared for large and confused seas, severe weather, and strong winds opposing significant tidal streams. Do not underestimate the importance of harmonious crew dynamics in challenging conditions.
- At least two crew members on each leg of the race must have a valid World Sailing (ISAF) Safety at Sea certificate. The course that is two days in length and includes an in-pool session is accepted. MED A-3, now SDV-BS is not accepted because it does not have course content specific to managing incidents on sailing vessels, and it does not have an in water practical portion to the course.
- At least one person on each leg must hold a valid basic first aid certificate or be a medical professional.

Boat Suitability

- This is a [Category 2 Offshore Special Regulations](#) with amendments that will be published in the Notice of Race.
- Rating/Speed – All monohulls must be rated at a minimum ORC GPH of 690 or faster. This equates to a PHRF-NW rating of approximately 135. All multihulls must rate PHRF-NW 135 or faster.

Summary of Key Dates and Requirements.

Friday, Nov 30, 2018		Deadline for Completed Applications for Entry, Entry Fees and Supporting Documents
Tuesday, February 19, 2019		Withdrawal Deadline for 50% refund
Wednesday, May 15, 2019		Final ORC/PHRF NW ratings review by Organising Authority
Friday, May 31, 2019	1500 hrs	Skippers Meeting (location TBA)
Friday, May 31, 2019	1730 – 1900 hrs	Welcoming Reception (location TBA)
Saturday, Jun 1, 2019		RACE START 0930hrs
Saturday, Jun 14, 2019		Awards Ceremony (time & location TBA)



Notable changes for 2019

- 1) At the request of Division 3 boats, we will be extending finish times on some of the legs. What this means, is that planned dinners and award ceremonies may be changing.
 - a. Comox-No Awards ceremony
 - b. Hardwicke Island – No Awards ceremony, dinner will be offered, but if you finish late, dinner may not be available. If you finish by 1800, dinner will be available.
 - c. Telegraph Cove – No awards ceremony if boats are still on the race course at 1900 hours
 - d. Port Hardy – two nights instead of one, with a dinner and awards being arranged for the evening of June 6th. This is new, so details will be available early in 2019.
- 2) A new motel is being built in Telegraph Cove, so there should be lots of accommodations.
- 3) Moorage in Port Hardy will move off the Summer Floats and onto the commercial floats in the inner basin. (details under the Port Hardy section).
- 4) We will be arranging for special rates at hotels in most of the ports, and these will be communicated once we know the details

Now some information on each port of call, subject to change at any time

When you come ashore after a great day of racing, expect most shore facilities to be taxed to capacity with the racers and shore crew's. Some towns are very small, and the wait for a pint may take a while.

Please manage trash and recyclables responsibly. We are working closely with each port to ensure facilities for recycling and trash will be available. Please refrain from using disposable plastic water bottles. It is recommended that crews have refillable personal water bottles. Potable water is available in every port except Hardwicke Island.

Canada Customs Information for non-resident vessels

Bedwell Harbour – South Pender Island - [Link to Canada Customs Bedwell Harbour](#)

Nanaimo – Dock E [Link to Canada Customs Nanaimo](#)



Nanaimo Welcome Reception & Send Off

[Please click on this link to Tourism Nanaimo for information on hotels, restaurants and local events.](#)

Date: Friday, May 31

Moorage: The boats will moor at the W.E. Mills Landing & Marina in downtown Nanaimo. Please call the Harbour Marina at (250) 755-1216 to confirm your date of arrival. Complimentary moorage is provided courtesy of the Port of Nanaimo for up to three nights prior to the race start and up to 2 nights after the finish of the race. The marina is located adjacent to the tall condominium tower located on Promenade Drive. Moorage is provided on "R", "S" and "T" docks. Rafting will be necessary. Power is available, but we recommend that you bring a 15amp splitter, to share power with your neighbour. The 15 amp splitter is a must have in every port with power.

The docks will be open to the public during daylight hours and are usually very busy with folks checking out the fleet.

Fuel: Fuel is available at the Petro-Canada Fuel Dock, located just adjacent to the W.E. Mills Pier, is open, according to the website, from 0700 to 1900.

Washrooms and Facilities: Showers and washrooms are located near the Harbour Masters Building. You may obtain a pass card for a \$20.00 refundable deposit, showers take loonies (1\$ Canadian Coins). Access to showers and washrooms is by pass card only. In addition, portable toilets will be installed on the pier for the afternoon and evening of May 31st.

Accommodations: Please follow the Tourism Nanaimo Link above. The Coast Bastion Inn, part of the Coast Hotel Chain, a Sponsor since the start of the event, is located directly across from the moorage facility at 11 Bastion Street (250) 753-6601.

Motor Home Parking: Here is a link to [Parking Lots In Nanaimo](#) . Parking, while shopping at the Port Place Mall is acceptable, but, if you overstay your welcome, they will ticket or tow you.

Shopping, Liquor Store, groceries etc.: Thrifty Foods is located at the Port Place Mall, opposite Promenade Drive, as is the BC Liquor Store where you will be able to purchase the beers and wines from our sponsors [Longwood Brewries](#) and [Hester Creek Wines](#).

Vehicle Access to the W.E. Mills Pier: Vehicle access to the pier is one of the greatest challenges we face at the start of the race. The pier is not in a convenient location that supports loading and off-loading of gear. We ask skippers to please ensure that boats are delivered to Nanaimo with the gear required for the first leg on board.



If you will require access to the pier to unload equipment and supplies, please contact the Race Office at +1 (250) 324-8886 to arrange a time slot to enter. Only two vehicles may access the pier in any given time. If you do not arrange a time for access, you may not be able to gain entry.

The roundabout at the head of the pier is owned and operated by the condominiums. We have permission to use the roundabout at their leisure. The condominiums are senior oriented, and we must ensure that access along Promenade Drive is kept clear for fire trucks and ambulance services. Access to the roundabout is at the end of Promenade Drive and is controlled by a lift gate.

A Van Isle 360 volunteer will be present to ensure that vehicles with time slot appointments may access to the roundabout at the specified time. Vehicles awaiting access to the roundabout must not double park or stand on Promenade Drive as it must be kept clear for emergency services. If you miss or are late for your allotted time, we will do our best to fit you in, but you may not be able to gain access.

Unfortunately, there are no wheelbarrows available to assist in moving gear. Once off-loaded, vehicles must be moved immediately to allow space for others to off-load.

Drivers of the vehicles must remain with the vehicle and move it when asked by race volunteers. Any vehicles left unattended may be towed. Thank you for your cooperation.

Boat Inspections: May 31st, Boat Inspections must be completed before proceeding to final registration for Sailing Instructions, transponders and skippers packages. Pre-race courtesy safety inspections will be conducted by the Royal Canadian Marine Search and Rescue (RCMSAR) volunteers from Station 27 (Nanaimo) and Station 29 (Ladysmith). Please have all safety gear stowed onboard your vessel prior to inspection.

RCMSAR volunteers will be checking for compliance to Canadian Coast Guard/US Coast Guard minimum equipment requirements as well as the safety requirements outlined in the Notice of Race. [Canadian Small Craft safety requirements may be found by following this link.](#)

Please note that local boats may be able to have their inspections completed earlier in the week if RCMSAR volunteers are available.

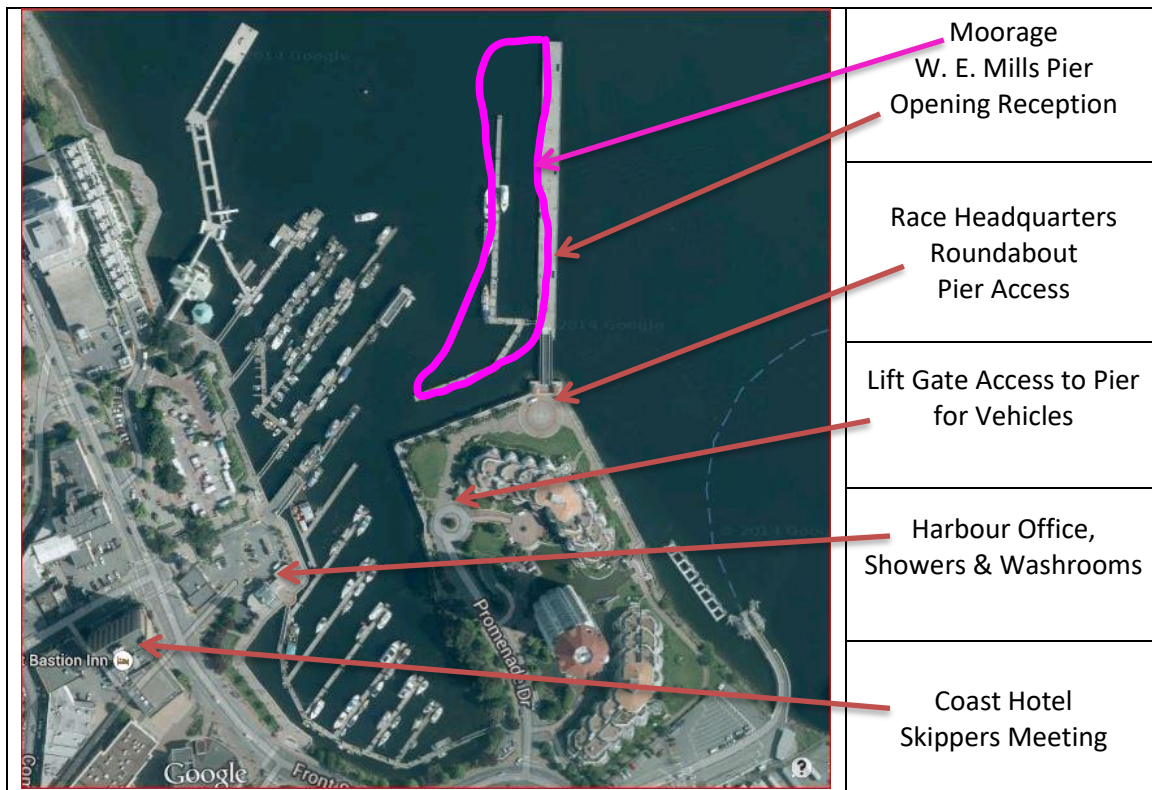
The Safety Officer for the race is Bill Bakkan. Bill can be reached at the following e-mail; Bill Bakkan - urbanblight@shaw.ca

Registration: May 31st – 1000 to 1700 hrs. The mobile Race Committee Headquarters is located in the white building on the north side of the ramp. Skippers will be able to pick up the final sailing Instructions, spot transponders, meal tickets and other event information.

Skippers Meeting: May 31st, – 1500 hrs. – Coast Bastion Inn – Meeting room location will be posted in the lobby at the hotel. Due to space limitations, this meeting is restricted to Skippers, Watch Captains and Navigators.

Welcome Reception: May 31st, – 1800 hrs to 19:00 hrs. An informal welcome reception by Royal Canadian Marine Search & Rescue (RCMSAR) will be held on the Visiting Vessels Pier adjacent to the moorage. The Port of Nanaimo, Hester Creek Wines, Longwood Brewery and Paradise Island Cheese welcome you to Nanaimo. Skippers will be introduced and presented with their Van Isle 360 Battle Flag. This reception is open to crews, road crews and friends and family. Identification, in the form of wrist bands will be required, and will be included in the skipper’s package. There is a limited number of wrist bands available (BC Liquor Laws).

Map of the W. E. Mills Pier Area





Leg 1 Nanaimo to Comox (Finish in the vicinity of Chrome Island)

Date: Saturday, June 1

Distance: 38 nautical miles approximately

Sail Past: An informal sail past and introduction of boats, will take place on the visiting vessels pier emceed by the Race Committee. Boats are asked to participate by sailing close to the pier for an introduction to the spectators during the pre-race warm-up. Make sure to fly your battle flag as there will be a prize for the boat that receives the loudest encouragement from the spectators!

Start: 09:30 hrs: The Race Committee will be on station on the W. E. Mills Pier in Nanaimo Harbour. The start (as per the S.I.'s) is in the harbour between the Motor Home on the W. E. Mills pier/Roundabout and the Satellite reef marker. There is excellent spectator viewing from the Pier.

Finish: The finish will be described in the Sailing Instructions and will be in the general area of a transit line between Chrome Island near the south West Tip of Denman Island and the Vancouver Island shore. There should be excellent viewing for boats finishing during the day. RCMSAR stations 60 and 59 will be available to escort any boats that require assistance to the Comox Harbour. We expect most boats to be parking during darkness. Please note that the BC Ferry that operates between Vancouver Island and Denman Island has been changed to a cable ferry.

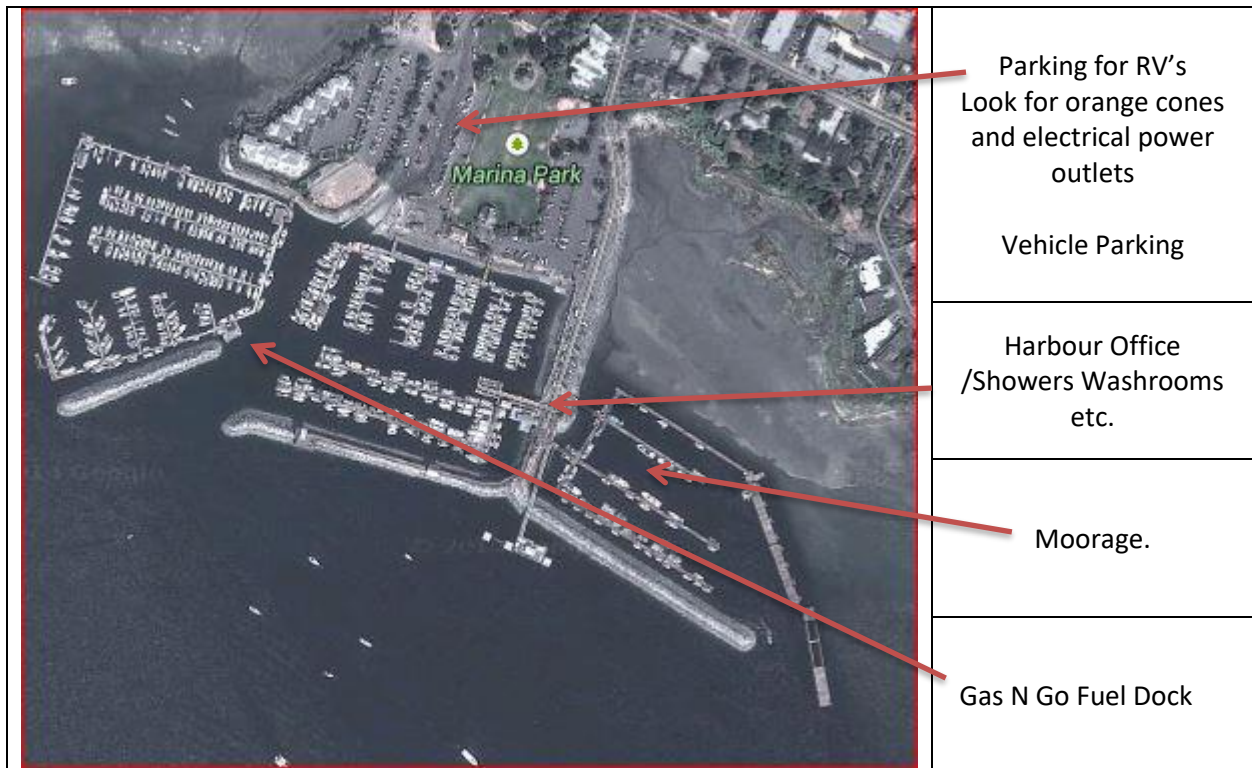
YOU MUST NOT CROSS THE FERRY PATH IF THE RED LIGHTS ARE DISPLAYED AT EITHER FERRY TERMINAL.

Please follow this link for more on the [Denman Cable Ferry Information](#)

Moorage: Moorage has been pre-arranged and paid for at the government dock.

Upon arrival in Comox, boats will call into the harbour master on **channel 66A** and will be met and directed to slips. Please follow their instructions as moorage is very tight. Power is available.

<http://comoxharbour.com/>



Fuel: [Follow this link to the GAS N GO Fuel Dock information](#)

Facilities: Washrooms and showers are located at the top of the ramp by the harbour office. Showers take Loonies.

Parking: Overnight parking will be available in the Marina parking lot for motor homes, in the designated area only.

Accommodations: [Please follow this link for accommodations in Courtney and Comox.](#)

Awards Presentation: As we expect the boats to finish late on Saturday evening, there will be no awards. Awards will be presented in Campbell River along with the Campbell River results. Note that the results for the first leg will be posted on-line on the Van Isle Website once available.



Leg 2 Comox to Campbell River Fishing Dock Finish

Date: Sunday, June 2nd

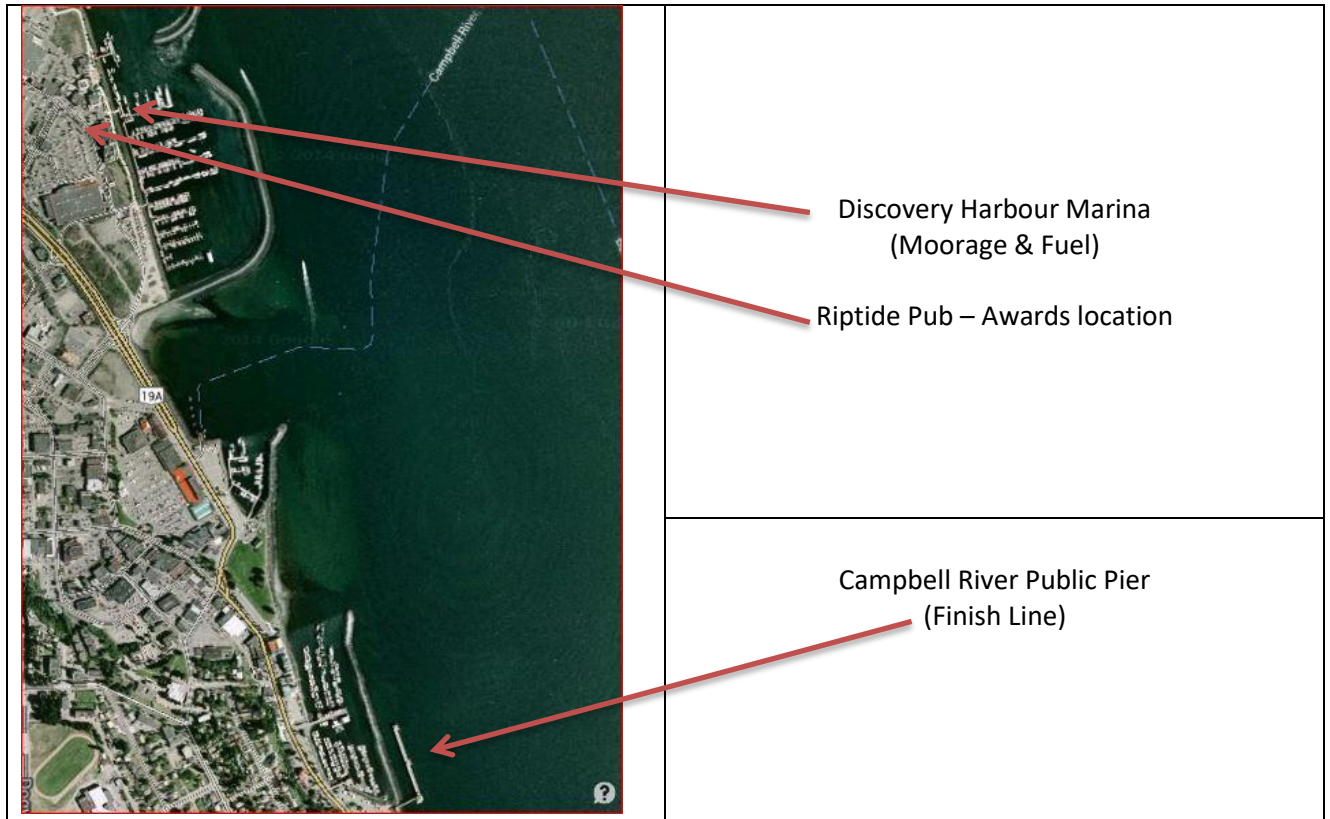
Distance: 28.20 nautical miles

Start: 0900 hrs. The start is on the east side of the Comox Sand Bar. Make certain you leave lots of time to motor out to the start. Watch your depth over the Comox Bar.

Special Notes: This leg is where the tidal direction meets. The tidal stream entering the Strait of Georgia around the Southern end of Vancouver Island meets the corresponding tide that flows around the Northern end of the island. The tide floods south, north of Middenatch Island and floods north, south of Middenatch Island.

Finish: The finish will be off Campbell River's famous fishing pier in Discovery Channel. Besides the excellent viewing, there is an awesome ice cream shop right on the pier. The spectators can almost touch the top of the mast of the boats short tacking the Vancouver Island shore.

Moorage/Fuel: Moorage is provided courtesy of the [Discovery Harbour Marina](#), the last marina heading north in Discovery Channel, located behind the large breakwater with the fuel dock. Boats will need to raft up to other vessels as directed. Upon finishing contact the marina on vhf channel **66a** for instructions.



Washrooms and Facilities: All amenities are at the head of the dock, showers and washrooms. A shopping mall is directly in front of the marina with groceries and [Ocean Pacific Marine](#) is a full-service yard and chandlery located just north of the Riptide Pub.

Parking: Parking is available in the large gravel parking lot immediately south of the marina and the shopping centre.

Accommodations: The Coast Hotel in Campbell River will be offering VI360 rates. For other accommodations please follow this link [Campbell River Tourism](#)

Awards Presentation: The awards presentation will be in or near the Rip Tide Pub with dinner at the pub. Three blasts of the air horn will announce that the presentations will begin in approximately 15 minutes.

Special Note: Road Crews will have a lay day on June 4th as the boats will be at the fish farm for the evening of June 3rd. Maybe a good time to do laundry or head to the spa or go fishing. If you haven't arranged for provisions in Port Hardy, now is the time, don't delay. Phone Gary Jackson at the Port Hardy Save-On_Foods grocery store at 250-949-6455 to place your orders or e-mail him at 61asm@owfg.com.



Leg 3 Deepwater Bay to Hardwicke Island

Date: Monday, June 3rd

Distance: 24.50 nautical miles

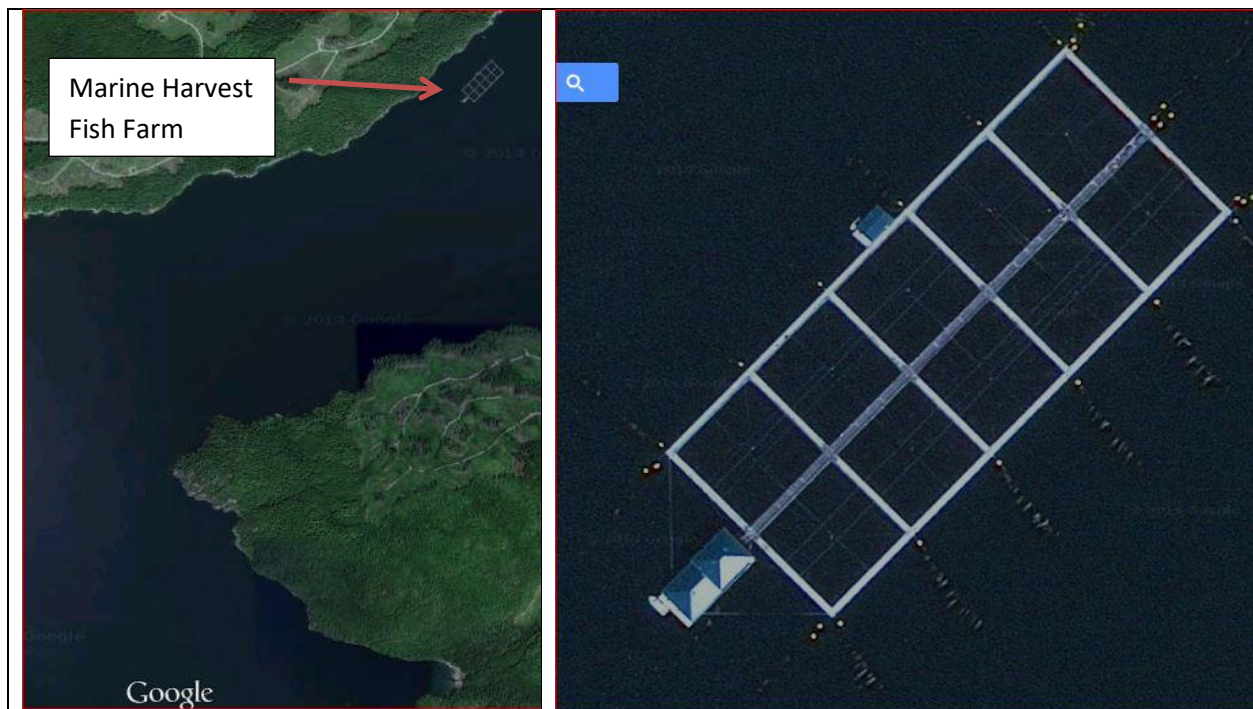
Start: 09:00 hrs.

Special Notes: You will need to be up early to catch slack water around 0525 hrs in Seymour narrows. The starting area is in Deepwater Bay 10 miles north of Campbell River. The committee boat will be on station in Deepwater Bay on Quadra Island. Browns Bay Marina (in Browns Bay) will be open for breakfast at approximately 0700 hrs.

Seymour Narrows is the main shipping channel for all traffic heading to or coming from the North. The currents through Seymour Narrows are some of the strongest in the world at times reaching 16 knots. Expect to meet and travel with significant amounts of commercial traffic at slack water. Over the next several days you will need to be very wary of Alaskan Cruise Ships, Ocean Tugs with long tows, log booms, sports and commercial fisherman.

Finish: The finish is near Eden Point in Chancellor Channel. The race committee boat will be on station.

Moorage: Moorage has been provided courtesy of Marine Harvest Canada at their salmon farm in Chancellor Channel near Hardwicke Island. Mind the anchor lines securing the pens.





Facilities: You will need to be totally self-sufficient here. Port-a-potties will be provided. Staff washrooms are off-limits. The feed barn will not be available for overnight tenting. Please no tenting on the walkways.

Reception/BBQ: No doubt you will have heard all sorts of opinions on salmon farming, and this will be your opportunity to see first hand how a salmon farm operates. The folks at Marine Harvest, and the BC Salmon Farmers are very proud of their facilities and operations. A tasty salmon meal has been organized by the BC Salmon Farmers Association and Marine Harvest Canada. Meal tickets will be available early in 2019. **Tickets will not be available for purchase at the farm.** All proceeds will go towards a worthwhile cause in the community of Sayward across the channel. In 2015, for the first time, the Race Committee was unable to get to the Marine Harvest Fish Farm due to high winds and dangerous standing waves. As such, there will be no planned awards as we learned a hard lesson.

Leg 4 - Hardwicke Island to Telegraph Cove

Date: Tuesday June 4th

Course: Hardwicke Island to Telegraph Cove

Distance: 40.30 nautical miles

Start: 0900 hrs: The start is off Eden Point on South Thurlow Island, near the finish from the previous day. This leg takes you past Robson Bight, the famous killer whale rubbing beach. The size and shape of the pebbles attract the whales to this beach.

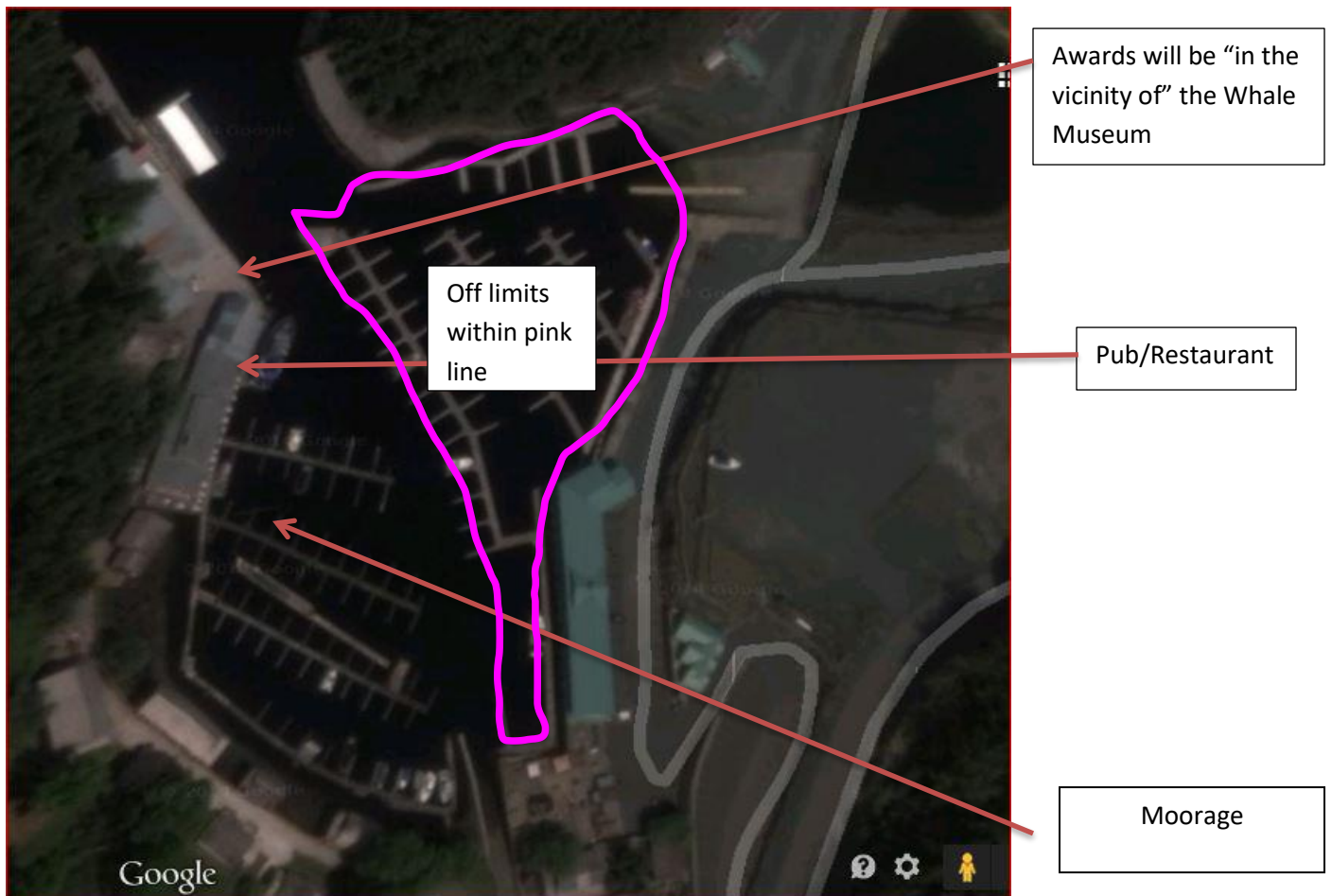
Finish: The finish is between the entrance to Telegraph Cove and Lewis Point. The Race Committee will be on station at Ella Point. There is excellent spectator viewing and fantastic photo opportunities.

Moorage: We have been advised we may no longer moor in the previous moorage area due to change in ownership. Moorage courtesy of Telegraph Cove Resort will be provided. Thank you Gordie and Marilyn. Moorage is very, very, very tight. Boats will be assigned a spot with assistance from Jeff & Sylvia. Call in on channel 66a. **Note that you may not be able to enter the harbour immediately after finishing as we will be parking boats based on length, beam and draft. We thank you for your patience in advance.**

Facilities: Cabins, showers, laundry are all close at hand. A new motel is now open above the old cabins, so there should be lots of accommodation. There is also the Old Sallery Pub & Restaurant and the Seahorse Café, as well as a new Pizza place which will be open late to accommodate our arrival. Expect a long wait for service in the restaurant and pub. This is a great place to cook a dinner and unwind with your shore crew and perhaps other boats. There is a general store with limited supplies.

The Seahorse Cafe will extend their opening hours on June 4th, offering dinner options as burger combos with home cut fries, souvlaki, tuna loin & bison loin skewers. On the morning of June 5th they will open up at 6 am offering coffee and breakfast.

Awards Reception: This is the second longest leg on the inside, and at some point, you will be battling current. The Big Boat Fleet and Division 1 fleets, assuming decent wind, usually finish in good time. We will be extending the finish time to maximize the opportunity for Division 2 & 3 boats to complete the leg. If the fleet finishes by 1900 hours, Awards will be on the Boardwalk near the “the Bones Project” (whale museum) Three blasts of the air horn will announce that the awards presentation will begin in approximately 15 minutes. If the boats are still on the race course, Awards will be held in Port Hardy.





Special Notes: If you haven't arranged for provisions in Port Hardy, now is the time, don't delay. Phone Gary Jackson at the Port Hardy Save-On-Foods grocery store at 250-949-6455 to place your orders or e-mail him at 61asm@owfg.com .

Leg 5 – Telegraph Cove to Port Hardy

Date: Wednesday, June 5th

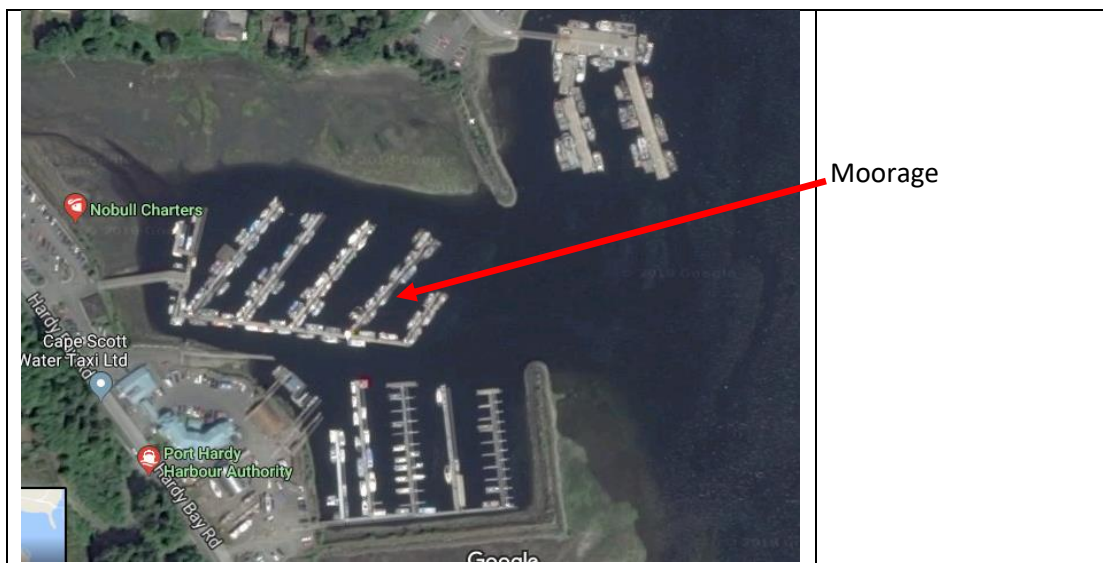
Distance: 28.10 nm

Start: 0900 hrs. The start will be in the same area as the previous finish.

Special Note: The Royal Canadian Mounted Police will be on hand in full red Serge to welcome every boat and deal with any indiscretions that have not made it to the protest room yet.

Finish: The finish is in Hardy Bay off the Government dock in downtown Port Hardy. The race motorhome will be on station on the Government Dock. With the onshore breeze in the afternoon, this is a great place for viewing panic spinnaker takedowns.

Moorage: After 20 years, the District of Port Hardy and the Port Hardy Harbour Master have graciously agreed to allow the fleet to moor in the inner basin at the Fisherman's Floats instead of the "Summer Floats" adjacent to the Government Dock, at the foot of Granville St. Boats will most likely have to raft, and limited power will be available on the docks, but the fleet will be well protected. After finishing off the Government Dock, call on 66A for moorage instructions.





Facilities: Fuel is available at [The Quarterdeck Marina](#), located adjacent to the Fisherman’s Floats. Washrooms are available at the Harbourmaster Office, two pubs/restaurants are within walking distance at the Quarterdeck and Glenn Lyon Inn.

The Port Hardy Airport is approximately a 10-minute drive located south of town. Follow this link for [Flights to and from Vancouver and Victoria are available.](#)

Accommodations: Follow this [link to information on accommodations in Port Hardy,](#)

Awards Reception: Awards will be held in conjunction with the new CSR Marine BBQ, planned for June 6th exact location To Be Determined.

Other Notes: Stock up on provisions here. The Winter Harbour General Store has lots of beer and rum, and canned/boxed foods. However, the next stop for provisioning for fresh supplies will be Ucluelet. As this is customarily the crew change port from inside crew to outside crew, it can be a busy stop. Enjoy and prepare for traversing Nahwhitti Bar into the open Pacific Ocean.

Leg 6 – Port Hardy to Winter Harbour

Date: Friday June 7th

Distance: 69.40 nautical miles

Start: 0900 hrs. The start line is the same as the previous finish line.

Special Notes: This is the first offshore leg and takes sailors around the top of the Vancouver Island, past Cape Scott to the open Pacific. The Nahwhitti bar has a reputation for being one of the nastiest bits of water on the west coast when wind opposes tide. It lived up to its reputation in 2015.

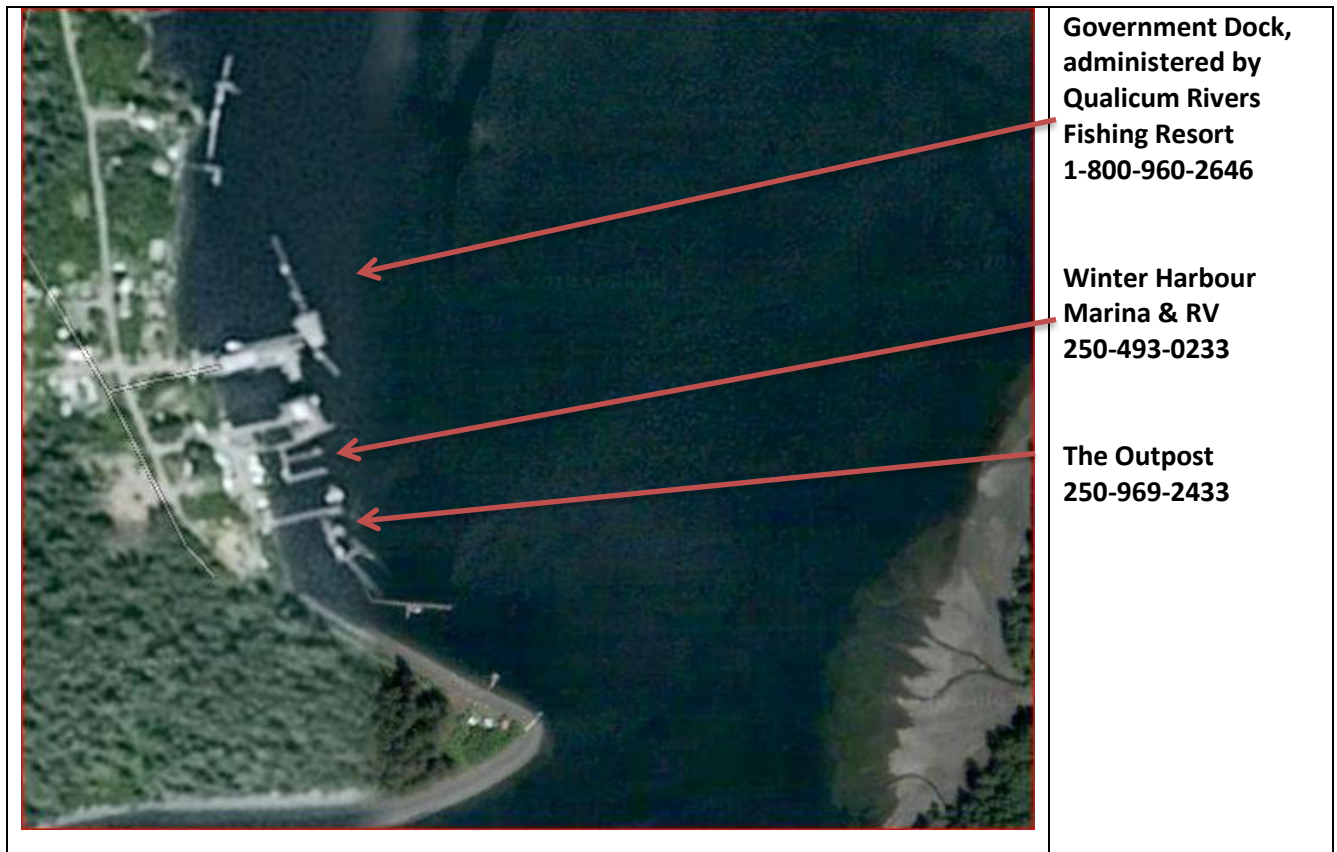
Finish: The race committee will be on station at the Kains Island lighthouse (Quatsino Light station) and the finish will be a transit from the lighthouse to Robson Rock. This is the preferred entrance to Forward Inlet from the North.

Transiting from the finish into Winter Harbour: The run in from the lighthouse to Winter Harbour is about 5 nautical miles. As this is a very busy sport fishing area, there maybe many boats fishing in the environs of the lighthouse and many miles offshore. If you finish at night, and the moon is not out, it is a very dark ride in, until you see the flashing green port hand light at Greenwood point at the entrance to the Harbour. Ensure you have a route planned out that clearly avoids the shoals around Robson Rock and South Danger Rock. Hall Bank extends well out into the Forward Inlet and keep well clear at Hazard Point and Greenwood point as the shore comes up quickly, and there are relatively large boulders lining the shoreline, especially on a low tide. If there is a fishery opening, commercial fishing vessels may be



lying at anchor through out the inlet. Over the course of many races, several boats have had their race cut short by momentary distractions or have become disoriented transiting from the finish line.

Moorage: The fleet is usually scattered throughout the harbour, as some accommodations also have moorage with the house/cabin. Skippers will need to secure their own moorage.



Facilities: Fuel is available at the [Outpost](#). The full-time population here is less than 20 people, however the summer population grows dramatically as this is one of the hot spots for offshore salmon and halibut fishing. There is limited shore power, very limited showers and toilets. Boats should plan on being self-sufficient here.

Accommodations: Winter Harbour has many small rentals and rooms available. [Follow this link for accommodations and campsites.](#)

Awards BBQ & Reception: June 8th - The awards presentation will take place with the accompaniment of a Blue Grass Band, exact location T.B.D. The folks of Winter Harbour and North Sails have organized a BBQ, with proceeds going to local improvements in town. The cost of the BBQ will be announced once we have more details. Please bring the exact change if possible.

Special Notes: Driving to Winter Harbour from Port Hardy is 76 km (47.5 miles) at an average speed of 40 km/hr (25 mph) via a gravel logging road, through Holberg. The logging roads are active Monday to Friday until 1700 hrs. A convoy for the shore crews will be organised at the Scarlet Ibis, a pub in Holberg, and the convoy will leave the pub after lunch on June 7th. Come and enjoy a great lunch with your fellow roadies. This logging road is sometimes active on weekends. If you encounter a logging truck, it will most likely be a double wide, similar to the one below.



The trucks will take up the entire width of the road, cannot maneuver and have the right of way. Be prepared to YIELD and BACK UP FAST. Carry good spare tires.



Leg 7 – Winter Harbour to Ucluelet (YOU – CLUE – LET)

“The Mark Livingstone Leg”

This leg is dedicated to the memory of Mark Livingstone who was instrumental in ensuring the safety of the fleet through his work with MCTS (Tofino Coast Guard Radio, now Prince Rupert Coast Guard Radio) and the Ucluelet RCMSAR Unit 38. In your race package will be a short note on the RCMSAR unit in Ucluelet and a request for a donation to support their volunteer operations.

Date: Sunday June 9th

Distance: 138.10 nautical miles

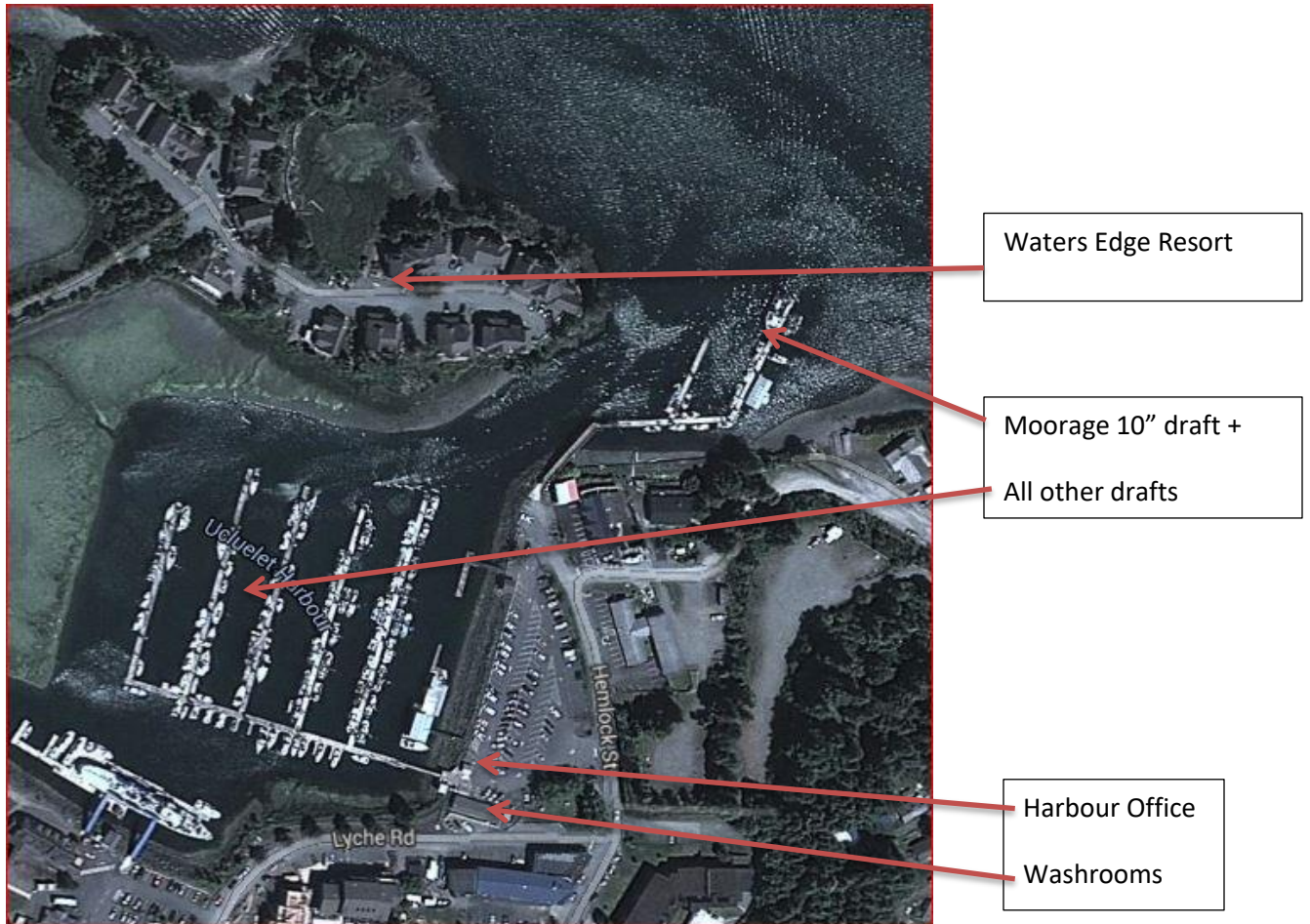
Start: 0900 hrs. The start is across the previous finish line at the lighthouse. This is the longest leg of the race.

Finish: The race committee will be on station at the Amphitrite Point Lighthouse. The finish will be from the lighthouse to the Red whistle buoy Y42. Good spectator viewing is available in front of the lighthouse. Some boats may finish in the early evening of 9th, though most will be finishing through the night and the following day. The entrance to Ucluelet can be challenging especially at night.

Volunteers from RCMSAR 38 Ucluelet & RCMSAR 29 Ladysmith will be on hand at the finish to provide safety escorts to those who need it. This will be weather dependent.

Boats have until 1200 hrs on Tuesday June 11th to finish this leg.

Moorage: Moorage is provided in the municipal marina “boat basin” near downtown, courtesy of the District of Ucluelet. Boats drawing more than ten feet will be required to tie up at the outer float in the same area. Contact the Harbour Master on 66a for moorage instructions.



Accommodations: [The Waters Edge Resort](#), directly across from the boat basin is a long time sponsor of the race, can't wait for that hot tub on the deck! [More accommodations and services can be found by following this link.](#)

Facilities: Shore power, water, fuel, showers, laundry, shopping all available and close by. The local grocery store is the CO-OP. There is so much to see and here, or just up the road at Pacific Rims National Park.

Special Notes: Approximately 75 local school children will be coming down to the docks on Tuesday June 11th for tours of the various boats. This is a wonderful opportunity to inspire the youth of Ucluelet in the sport we love, we encourage you to participate with great enthusiasm. The students begin their project on your boat in early March. Christine Brice, the teacher in charge of organising the students is an avid sailor, and would really like to stowaway on leg 9 if possible, but her boss is an avid sailor and says no. Please report any stowaways to the principal.



Welcome Reception & dinner: A BBQ dinner and awards presentation has been organized by the Ucluelet Chamber of Commerce at the New Community Hall on Tuesday June 11th beginning at 1700 hrs for pre-dinner beverages.

Leg 8 –Ucluelet to Victoria

Date: Wednesday June 12th

Distance: 97 nautical miles

Start: 1000 hrs. The start line is in the vicinity of finish line. Excellent spectator viewing is available from Amphitrite Point, directly in front of the lighthouse. The school children will be on hand to help count down the start, hence the reason for the later start. RCMSAR 38 will be on station as the pin at the end of the start line.

Finish: The finish will be at Clover Point. The race committee will be on station in the motor home on the point. There is excellent spectator viewing from the Parking lot at the point.

Finish time: Boats have until 1600 hrs on June 13th to finish.

Moorage: Complimentary moorage is provided at Royal Victoria Yacht Club. Moorage will also be available at the causeway floats in front of the Parliament Buildings downtown Victoria by the Greater Victoria Harbour Authority at the going rate at the skippers expense.

Parking: Motor homes may not park in the parking lot of RVYC. Parking will be available at the University of Victoria for about 15.00 per day. <https://www.uvic.ca/home/about/campus-info/maps/gif/parking-map-latest.gif>



Awards Presentation and Dinner: An awards presentation and dinner will take place at Royal Victoria Yacht Club (3475 Ripon Rd. Victoria, BC) on June 13nd at approximately 1800.

Leg 9 –Victoria to Nanaimo

Date: Friday June 14th

Distance: 60.40 nautical miles

Start: 10:00 hrs. The race committee will be on station near Clover Point.

Finish: The finish will be off the Visiting Vessels Pier in Nanaimo Harbour, the same starting line that the fleet departed on June 10th. Excellent spectator viewing from the Pier.

Finish Time: Boats have until 1400 on June 15th to finish this leg.

Moorage: Moorage will again be provided by the Nanaimo Port Authority. Please contact the Harbour Master upon your arrival on vhf channel 67.

Final Awards: After 14 full days of racing, we know most folks are ready to head home. Having said that, it is wonderful that so many choose to stay and salute the winners in each division.



Saturday, June 15th at 1100hrs **OR** 1 hour after the last boat arrives at the dock if boats are still on the race course. Three sounds of the air horn will announce that awards will begin in 15 minutes. Awards will take place in the general vicinity of the Mobile Race Headquarters in the Round About at the head of the W.E. Mills Pier where it all began a short 342 hours before.

Port Summary

Date	Start Port	Start Time	Finish	Overnight Port
Friday, May 31 st	Arrival Day	Skippers Meeting 1500hrs	Reception on W.E. Mills Pier	Nanaimo
Saturday, June 1 st	Nanaimo	09:30	Comox	Comox
Sunday, June 2 nd	Comox	0900	Campbell River	Campbell River
Monday, June 3 rd	Deepwater Bay	0900	Hardwicke Island	Hardwicke Island
Tuesday, June 4 th	Hardwicke Island	0900	Telegraph Cove	Telegraph Cove
Wednesday, June 5 th	Telegraph Cove	0900	Port Hardy	Port Hardy
Thursday, June 6 th	Port Hardy Lay Day		Port Hardy	Port Hardy
Friday, June 7 th	Port Hardy	0900	Winter Harbour	Winter Harbour
Saturday, June 8 th	Winter Harbour Lay Day		Winter Harbour Finish/Lay Day	Winter Harbour
Sunday, June 9 th	Winter Harbour	0900	Ucluelet	Ucluelet
Monday, June 10 th	Ucluelet Lay Day		Ucluelet Finish/Lay Day	Ucluelet
Tuesday, June 11 th	Ucluelet Lay Day		Ucluelet Finish/Lay Day	Ucluelet
Wednesday, June 12 st	Ucluelet	1000	Victoria Finish/Lay Day	Victoria
Thursday, June 13 th	Victoria Lay Day		Victoria Finish/Lay Day	Victoria
Friday, June 14 th	Victoria	1000	Nanaimo	Nanaimo
Saturday, June 15 th			Nanaimo Finish	HOME!