

2023 Van Isle 360 Roadie Planning Guide





2023 Roadie's Guide and Draft Schedule of events

Version 2.0 May 7, 2023

Welcome to the 2023 Van Isle 360, where as much fun can be had on the roads of Vancouver Island as on the water. This guide has been developed to provide you with the best available information for navigating between the ports on Vancouver Island. We have tried to provide a link for each town we visit so you can be ahead of the game on restaurants, things to do and accommodations. It is a dynamic document that will be updated as new information becomes available, or there are changes.

In all the stops the Race Committee will be very involved finishing and parking boats. If you have specific questions and the answers cannot be found in this guide, please reach out to Suzanne Travis who has graciously volunteered to assist with any queries you may have.

Suzanne can be reached at stravis999@aol.com Her mobile number is 206-979-6052.

The information in the Skippers Planning Guide pertains to boat specific information, this guide is to provide information for those who travel by land or arrive by sea without a road crew and need to determine which facilities are available in each port.

With the proper planning, it will be a wonderful adventure, if you chose to fly by the seat of your pants, it will be most problematic. Preparation and planning are key, as are 10 ply tires if you are driving into Winter Harbour. Expect to see bears, elk, eagles and if you are very lucky cougars or wolves. The highest density of cougars in North America is found on North Vancouver Island.

Key points for a successful journey:

- 1) Please don't ask us when the boats will arrive. Use the yellow brick [YB Tracking | Truly global satellite tracking beacons for yacht racing, adventures, treks, expeditions and challenges | Home](#) race tracker for information on where the boats are, their projected speeds, and you can do the math on arrivals.
- 2) Book accommodations or RV pads now. Mention you are with the Van Isle 360 for possible promotional rates. The Courtyard by Marriott hotel in Nanaimo is an official race sponsor with brand new rooms, opening in March 2023, see the Nanaimo Information Section
- 3) www.seniors101.ca has great information on RV sites around the Island.
- 4) www.vancouverisland.com has great information on each community, food, stops of interest, and accommodations. We will also provide links in each port as appropriate.
- 5) Plan out your pump out stations/Sani-Dump stations www.islandrvguide.com has a comprehensive list.
- 6) Know ahead where your boat will be docked and find out the washroom codes ahead of time so you can provide this most valuable information to your crew as soon as your boat docks.

Washroom codes will be published in this document as they are received or just ask at the marina/wharfing office.

- 7) Cell Phone coverage will depend on your provider.
 - Essentially from Victoria to Campbell River is good to excellent with a few grey zones.
 - Once north of Campbell River you will have no service until the turn off to Telegraph Cove, and even that is spotty. The exception is for 25 seconds as you pass Woss. Stop here for gas if you need to use your phone.
 - There is no coverage between Telegraph Cove until you reach Port McNeil, and then it is spotty to Port Hardy. Port Hardy has good coverage.
 - There is nothing between Port Hardy and Winter Harbour, except for an internet connection when you stop at the Scarlet Ibis in Holberg.
 - Winter Harbour has no cell phone coverage, but some of the accommodations do offer internet connections.
 - When departing Port Alberni for Ucluelet, there will be no coverage along Highway 4 until you arrive at the 'T' in the road at the Visitor Centre where the highway runs south to Ucluelet and North to Tofino.
- 8) With limited cell phone coverage this means you need to be self sufficient or travel with a buddy and be prepared.
- 9) North of Campbell River and west of Port Alberni, assume there is no BCAA or AAA roadside services. There is, but it is difficult to call. In addition, the length of the tow may not be covered, check your membership for coverage and be prepared to change flats and watch out for wildlife especially between dusk to dawn.
- 10) Costco stores are in Langford, Nanaimo, and Courtney
- 11) Fuel up where you can, the Gas Buddy app works well, when you have mobile coverage. The Race Committee carries a 20 litre container of gas and a 20 litre container of diesel for emergency purposes.
- 12) If you are a US citizen, make sure you have appropriate out of state health care coverage. If you are a Canadian citizen, make sure your boat crew have health insurance in case of an emergency and are taken to the US for treatment. This is a real possibility on the Ucluelet to Victoria leg and the Victoria to Nanaimo leg.
- 13) Carry a good quality first aid kit as access to medical services north of Nanaimo is limited and usually a great distance away.
- 14) Ensure gear, such as 15/30-amp splitters have your boat name on it, same with coolers or storage boxes et.
- 15) If your boat will require on loading or off loading of gear on June 2nd in Nanaimo, be sure to book your access time to the WE Mills Pier by calling us at 250-324-8886.



Information on each port of call, subject to change at any time

At the time of writing, the Canadian hospitality industry is struggling to fill positions as the return from the pandemic inches along. Services on Vancouver Island have been particularly challenged. The withdrawal of Greyhound Bus Lines from Canada has left a huge void in transportation options for rural communities, specifically Vancouver Island. Presently, there is NO daily bus service to Port Hardy. Many restaurants have closed or have limited hours of operation due to staffing shortages.

Perhaps the biggest challenge facing the Island is the unpredictability of service by BC ferries. We face ferry cancellations due to lack of crew with little notice that can disrupt the best planning. Consider plans carefully as just in time arrivals/departures are fraught with disappointment.

Please manage trash and recyclables responsibly. We are working closely with each port to ensure facilities for recycling and trash will be available. Please refrain from using disposable plastic water bottles. It is recommended that crews have refillable personal water bottles. Potable water is available in every port except Port Neville.

Canada Customs Information for non-resident vessels

The following two locations are the most popular locations for clearing customs upon entering Canada.

Bedwell Harbour – South Pender Island - [Link to Canada Customs Bedwell Harbour](#)

Nanaimo – Dock E [Link to Canada Customs Nanaimo](#)

Nanaimo Welcome Reception & Send Off

We are pleased to welcome the

[Courtyard by Marriott Nanaimo](#)

as the host hotel for the race start and finish.

Special Rates provided in links under “Accommodations”.

Date: Friday, June 2

Moorage: The boats will moor at the W.E. Mills Landing & Marina in downtown Nanaimo, see the map below. Power is available, but we recommend that you bring a 15- or 30-amp splitter for your boat to share power with neighbouring boat. The 15-amp splitter is a must have in every port with power. The docks will be open to the public during daylight hours and are usually very busy with folks checking out the fleet.



Washrooms and Facilities: Showers and washrooms are located near the Marina Building. You may obtain a pass card for a \$20.00 refundable deposit, showers take loonies (1\$ Canadian Coins). Access to showers and washrooms is with a pass-card only. Portable toilets will be installed on the W.E. Mills Pier for the period June 1 to the morning of June 3.

Accommodations: The newly built Courtyard by Marriott Nanaimo is the new sponsor for the race with great rates and brand-new facilities.

[Follow this link to book rooms before the start \(June 1, 2\) of the race](#)

[Follow this link to book rooms on June 17 and after the race](#)

The Skippers Meeting and Roadies Meeting will take place at the Courtyard by Marriott Nanaimo.

100 Gordon Street, Nanaimo, British Columbia, Canada, V9R 5J4

Tel: [+1 250-824-2705](tel:+12508242705)

Motor Home Parking: Here is a link to [Parking Lots In Nanaimo](#) . Parking, while shopping at the Port Place Mall is acceptable, but, if you overstay your welcome, they will ticket or tow you. RV Parking is only available at the Maffeo Sutton Park at 68 Arena Street in Nanaimo.

Shopping, Liquor Store, groceries etc.: Thrifty Foods is located at the Port Place Mall, opposite Promenade Drive, as is the BC Liquor Store where you will be able to purchase the beers from our sponsor [Longwood Brewries](#). Costco is located in the north part of Nanaimo or in Courtenay.

Vehicle Access to the W.E. Mills Pier: Road Crew vehicle access to the pier is one of the greatest challenges we face at the start of the race. The pier does not support convenient loading and off-loading of gear. We ask skippers to please ensure that boats are delivered to Nanaimo with the gear required for the first leg on board.

If you will require access to the pier to unload equipment and supplies, please contact the Race Office at +1 (250) 324-8886 to arrange a time slot to enter. Time slots are only 30 minutes in length. Only two vehicles may access the pier in any given time. If you do not arrange a time for access, you may not be able to gain entry. We have 40 entries and 30 time slots. Think BC Ferries delay and cancellations, if you miss your ferry or are delayed, we cannot accommodate you.

The roundabout at the head of the pier is owned and operated by the condominiums that tower over the pier. We have permission to use the roundabout at their leisure. The condominiums are senior oriented, and we must ensure that access along Promenade Drive is kept clear for fire trucks and ambulance services. DO NOT DOUBLE PARK OR OBSTRUCT TRAFFIC as you will be towed. Access to the roundabout is at the end of Promenade Drive and is controlled by a lift gate. A Van Isle 360 volunteer or



Nanaimo Port Authority employee will be present to ensure that vehicles with time slot appointments may access to the roundabout at the specified time. Vehicles awaiting access to the roundabout must not double park or stand on Promenade Drive as it must be kept clear for emergency services. If you miss or are late for your allotted time, we will do our best to fit you in, but you may not be able to gain access.

Unfortunately, there are no wheelbarrows available to assist in moving gear. Once off-loaded or on-loaded, vehicles must be moved immediately to allow space for others to off-load.

Drivers of the vehicles must remain with the vehicle and move it when asked by race volunteers. Any vehicles left unattended may be towed. Thank you for your cooperation.

Skippers Check In: June 2 – 1000 to 1500 hrs. The mobile Race Committee Headquarters is in the white building on the north side of the ramp.

Skippers Meeting & Road Crew Meeting: June 2nd, – 1500 hrs. – Skippers, 16:00 Road Crews

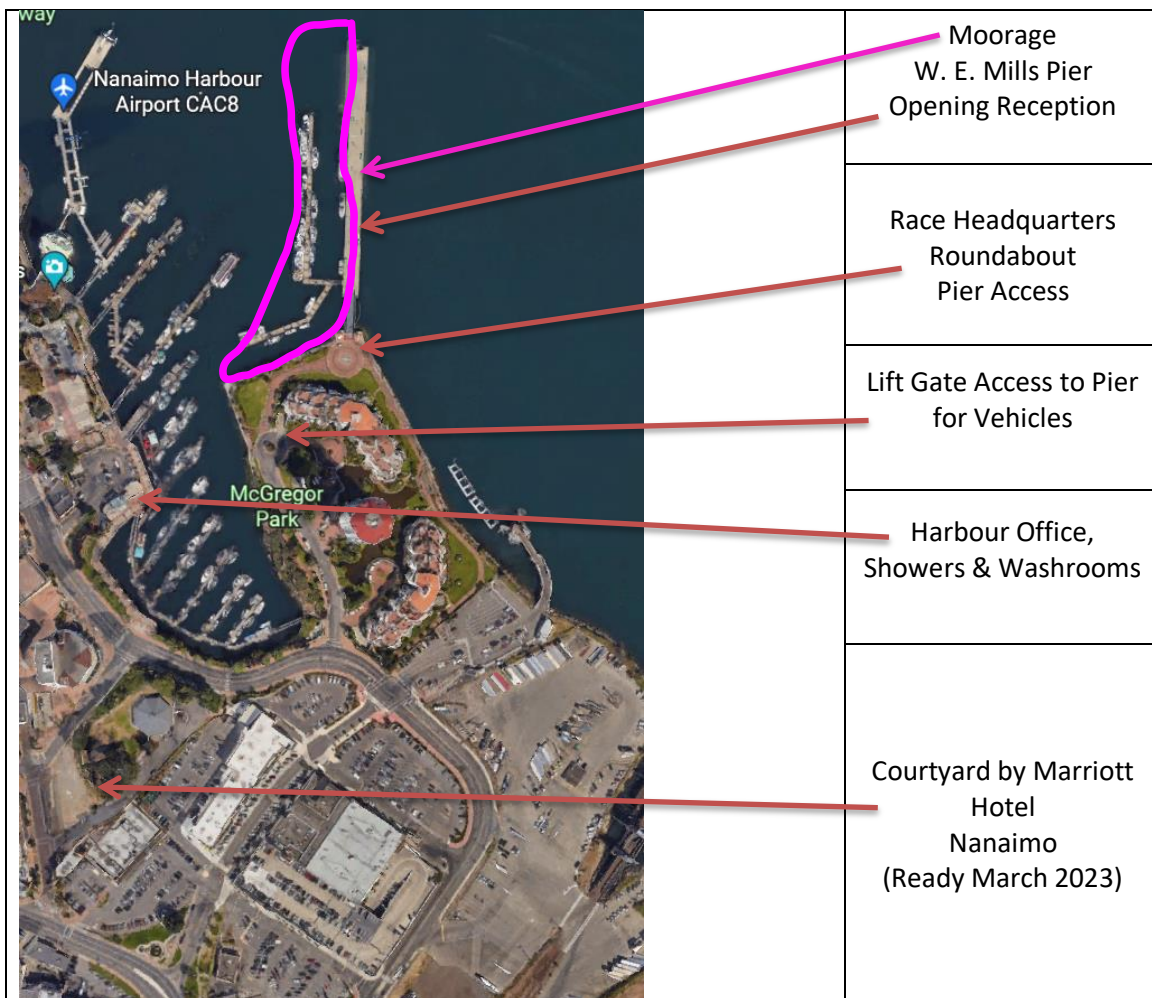
Courtyard by Marriott Nanaimo

100 Gordon Street, Nanaimo, British Columbia, Canada, V9R 5J4

Tel: [+1 250-824-2705](tel:+12508242705)

Welcome Reception: June 2nd, – 1730 hrs to 19:00 hrs. An informal welcome reception will be held on the WE Mills Pier adjacent to the moorage. The Port of Nanaimo, Longwood Brewery, Courtyard by Marriott Nanaimo and the Race Committee welcomes you to Nanaimo. Skippers will be introduced and presented with their Van Isle 360 Battle Flag. This reception is open to crews, road crews and friends and family. Identification, in the form of wrist bands will be required, and will be included in the skipper's package. There is a limited number of wrist bands available (BC Liquor Laws). The first beverage will be free, and additional beverages may be purchased for \$5.00

Map of the W. E. Mills Pier Area



Leg 1 Nanaimo to Comox (Finish in the vicinity of Chrome Island)

Date: Saturday, June 3

Driving Distance to Comox Harbour Authority: 116 kilometers/72 miles 1.5 hours

Driving Distance to Finish Line Location 5100 block Shoreline Drive: 80 kilometers/50 mile 1 hour.

Sailing Distance: 38 nautical miles

Start: 10:20hrs: The Race Committee will be on station on the W. E. Mills Pier in Nanaimo Harbour. The start (as per the S.I.'s) is in the harbour between the W. E. Mills pier/Roundabout and the Satellite reef marker. Excellent viewing, way better than Sidney – Hobart!

Finish: The finish will be described in the Sailing Instructions and will be in the general area of a transit line between Chrome Island near the southwest point of Denman Island and the Vancouver Island shore. There should be excellent viewing for boats finishing during the day. We expect most boats to be parking during darkness. It will take the boats approximately 2 hours to motor from the finish line to Comox Harbour

Moorage: Moorage has been pre-arranged and paid for at the Comox government dock. Boats will most likely be arriving late, check your race tracker, enjoy your drive up the old island highway. Lots of beaches and places to stop and catch a glimpse of the boats.



Facilities: Washrooms and showers are located at the top of the ramp by the harbour office. Showers take Loonies. **Washroom Access Code Mens 3600, Woman 0360**

Parking: Overnight parking will be available in the Marina parking lot for motor homes, in the designated area only.

Accommodations: [Please follow this link for accommodations in Courtney and Comox.](#)

Awards Presentation: As we expect the boats to arrive late on Saturday evening, there will be no awards. Awards will be presented in Campbell River along with the Campbell River results. Note that the results for the first leg will be posted on-line on the Van Isle Website once available.



Leg 2 Comox to Campbell River - Fishing Dock Finish

Date: Sunday, June 4

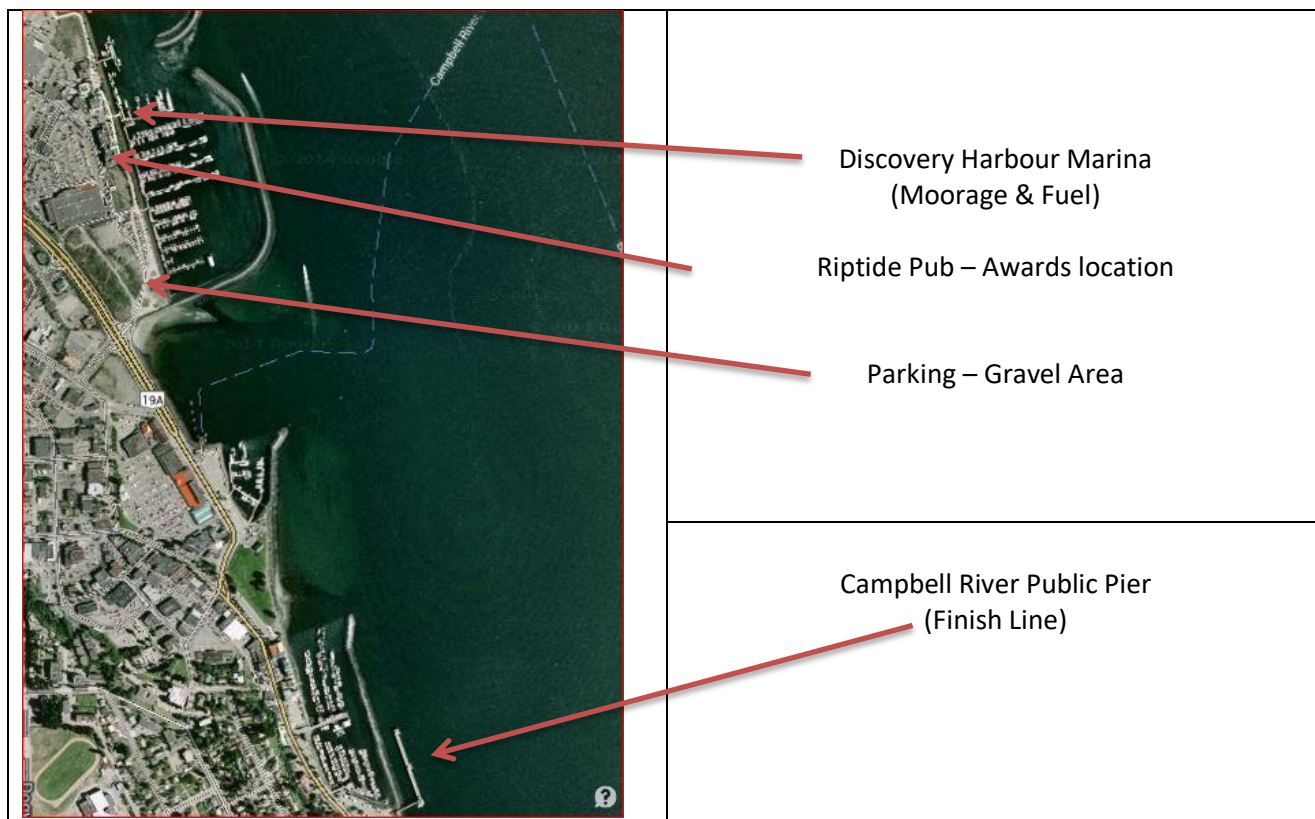
Driving Distance Comox Harbour to Fishing wharf in Campbell River: 58 kilometers/36 miles 50 minutes
Take the Old Island Highway, very scenic and you should be able to see the boats the entire day.

Sailing Distance: 28.20 nautical miles

Start: 0900 hrs. The start is on the east side of the Comox Sand Bar so unfortunately there is no viewing.

Finish: The finish will be off Campbell River's famous fishing pier in Discovery Channel. Besides the excellent viewing, there is an awesome fish and chips/ice cream shop right on the pier. The spectators can almost touch the top of the mast of the boats short tacking the Vancouver Island shore.

Moorage/Fuel: Moorage is provided courtesy of the [Discovery Harbour Marina](#), the last marina heading north in Discovery Channel, located behind the large breakwater with the fuel dock.



Washrooms and Facilities: All amenities are at the head of the dock, showers, and washrooms. You will be required to provide a deposit for an access key for your skippers. A shopping mall is directly in front of the marina with groceries and [Ocean Pacific Marine](#) is a full-service yard and chandlery located just north of the Riptide Pub. This is the last Chandlery and until Port Hardy, and the last Starbucks until you are back from the northern portion of the Island.

Parking: Parking is available in the large gravel parking lot immediately south of the marina and the shopping centre.

Accommodations: The Coast Hotel in Campbell River should be offering VI360 rates, not confirmed yet. For other accommodations please follow this link [Campbell River Tourism](#)

Awards Presentation: The awards presentation will be in or near the Rip Tide Pub with dinner available at the pub. Three blasts of the air horn will announce that the presentations will begin in approximately 15 minutes. There will be two sets of awards, so it will take a while to get through the hard-earned results. Lets hope for good winds so the fleet is in early.

Special Note: Road Crews will have a lay day on June 6th as the boats will be anchored out in Port Neville for the evening of June 5th. If you haven't arranged for provisions in Port Hardy, now is the time, don't



delay. **Email the Port Hardy Save-On Foods grocery store at Cheryl_Wright@saveonfoods.com to place your orders.** See the special notes on leg 3 for some ideas on what to do with all your spare time 😊

Leg 3 Deepwater Bay to Kelsey Bay Wharf **NEW INFORMATION*****

Date: Monday, June 5th

Driving Distance to Kelsey Bay Wharf from Comox: 78 Kilometers/49 miles 1 hour

Driving Distance to Telegraph Cove from Comox: 203 Kilometers/126 miles 2 hours 20 minutes

Sailing Distance: 30.4 nautical miles

Start: 09:00 hrs.

Special Notes: The boats will start right off the pier in Deep Water Bay, opposite Browns Bay. You will be up early as the distance from the Discovery Harbour Marina to Seymour Narrows is 10 miles, and slack water in Seymour Narrows is around 0600 hours. There is a clear cut on Highway 19 at Huntingford Point where you can see Seymour Narrows and watch the boats, from a distance, transit the Narrows. Seymour Narrows was the location of the world's largest non-nuclear peace time explosion when Ripple Rock was blown up in the middle of the passage. Give it a google, there is some cool videos of the explosion.

Finally, Road Crews will have a lay day. You can explore the area around Campbell River, stocking up on supplies or placing your Port Hardy food order or venture ahead to the quaint village of Telegraph Cove. If you want to watch the boats finish before they head out to anchor in Port Neville, head to the Kelsey Bay Pier located in Sayward. If you want to spend the night in Sayward where Kelsey Bay is located, there are a few RV campsites available.

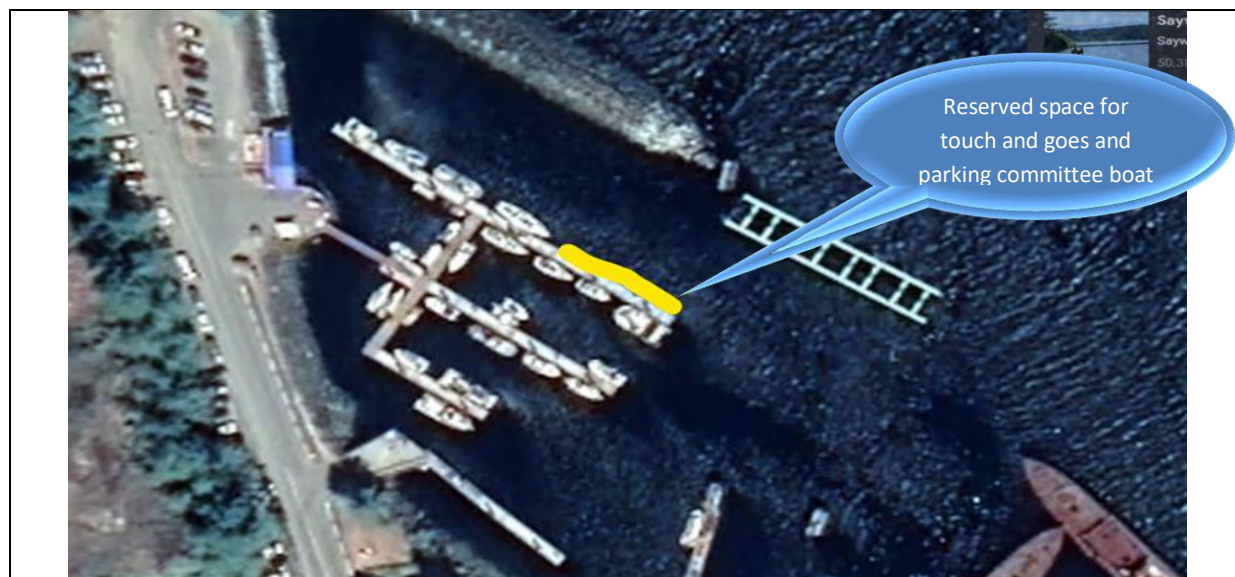
Telegraph Cove offers great food and beverages at the Killer Whale Café, the Old Saltery Pub as well as Sally's Food Bar. If you're not staying in the accommodations in the Cove, there are lots of RV sites or campsites to choose from. Reservations are must at either [Telegraph Cove Resort](#) or [Telegraph Cove Marina and RV Park](#).

Finish: The finish will be at the wharf at Kelsey Bay.



Sayward Harbour

If your boat requires supplies, transfer of overnight gear food etc., we have arranged for 70 feet of dock space in the Sayward harbour. **The image below shows the dock space reserved in Sayward for touch and go's ONLY, boats cannot tie up for extended periods of time, and there is no overnight moorage.**





Leg 4 – Kelsey Bay Wharf to Telegraph Cove

Date: Tuesday June 6

Course: Kelsey Bay to Telegraph Cove

Driving Distance: 150 Kilometres/93 miles 2 hours

Sailing Distance: 27.8 nautical miles

Start: 0900 hrs: The start is off at the entrance to Port Neville, so unfortunately you will not be able to see the boats start. This was changed because adverse tide on the morning of the 6th may prevent some boats from getting to the start line in a timely fashion.

Finish: The finish is between the entrance to Telegraph Cove and Lewis Point. The Race Committee will be on station at Ella Point. There is excellent spectator viewing and fantastic photo opportunities at the end of the boardwalk on the Telegraph Cove Marina and RV Park side of the cove (east side).

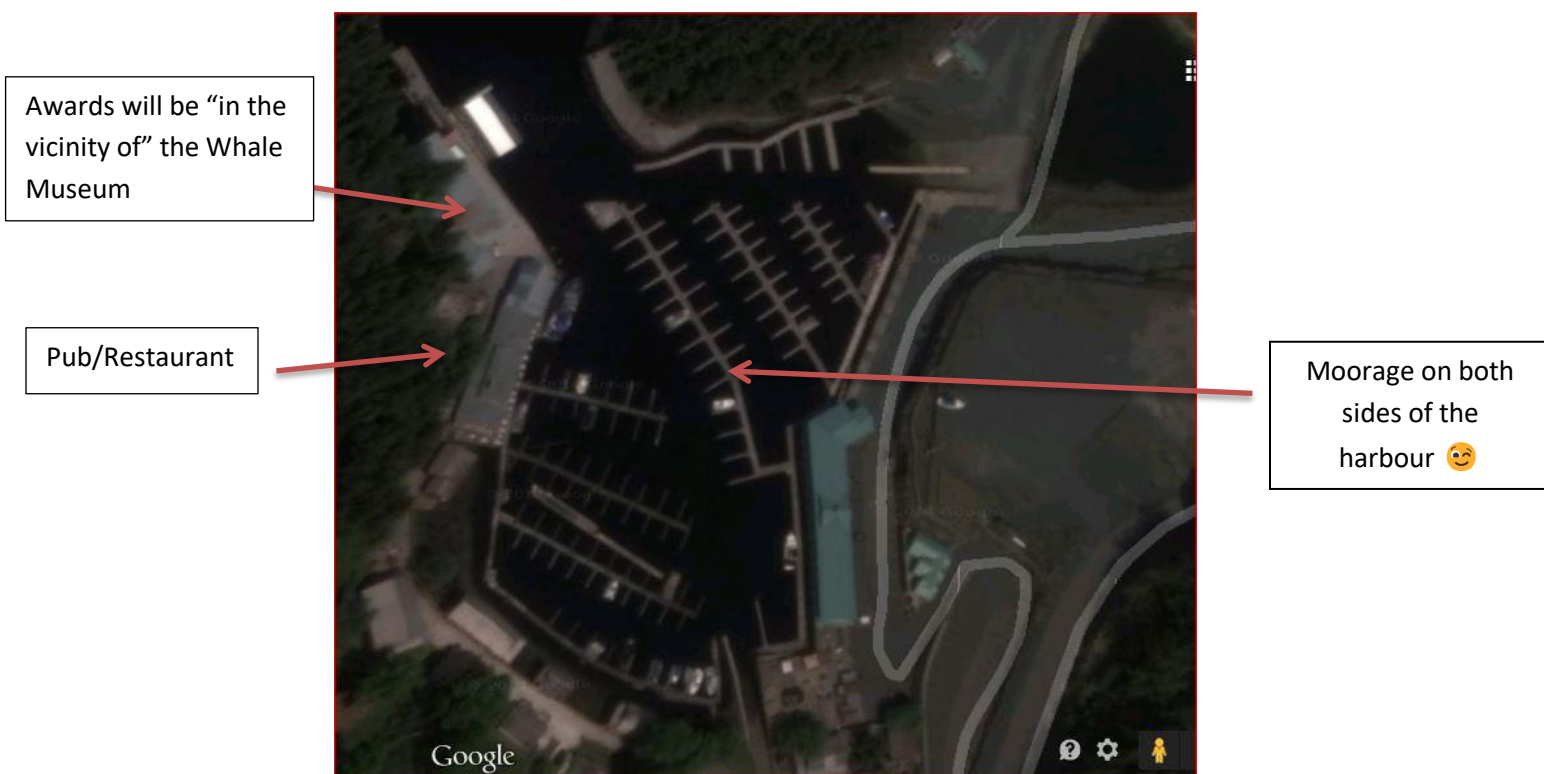
Moorage: Moorage will be on both sides of the cove and is like a gigantic back gammon board. Watching Sylvia and Jeff direct boats into moorage spots is the ultimate Looky-loo pastime.

Facilities: The cove is truly a step back in time, and there is so much to see and do. Cabins, showers, laundry are all close at hand. A new motel is now open above the old cabins, so there should be lots of accommodation. Telegraph Cove offers great food and beverages at the Killer Whale Café, the Old Saltery Pub as well as Sally's Food Bar. If you're not staying in the accommodations in the Cove, there are lots of RV sites or campsites to choose from. Reservations are a must at either [Telegraph Cove Resort](#) or [Telegraph Cove Marina and RV Park](#). There is a general store with limited supplies.

Whale Watching, Kayaking, Grizzly Bear tours are all available in Telegraph Cove.

Awards Reception: With the change in location of the finish line at Kelsey Bay, and the resulting reduction of 6 nautical miles of sailing as compared to starting at the fish farm, we are optimistic we can produce the awards for the Telegraph Cove leg and for the Kelsey Bay leg. We have extended the finish time to allow the Division 2 & 3 boats a good shot at completing the leg in Telegraph Cove.

If the fleet finishes by 1900 hours, awards will be on the Boardwalk near the "the Bones Project" (whale museum). Three blasts of the air horn will announce that the awards presentation will begin in approximately 15 minutes. If boats are still on the racecourse beyond 2000 hours, awards will be held in Port Hardy for three legs. Results will be posted once all racers have finished and have been parked.



Leg 5 – Telegraph Cove to Port Hardy

Date: Wednesday, June 7

Driving Distance to Seagate Pier, Port Hardy: 64 Kilometers/40 miles 1 hour

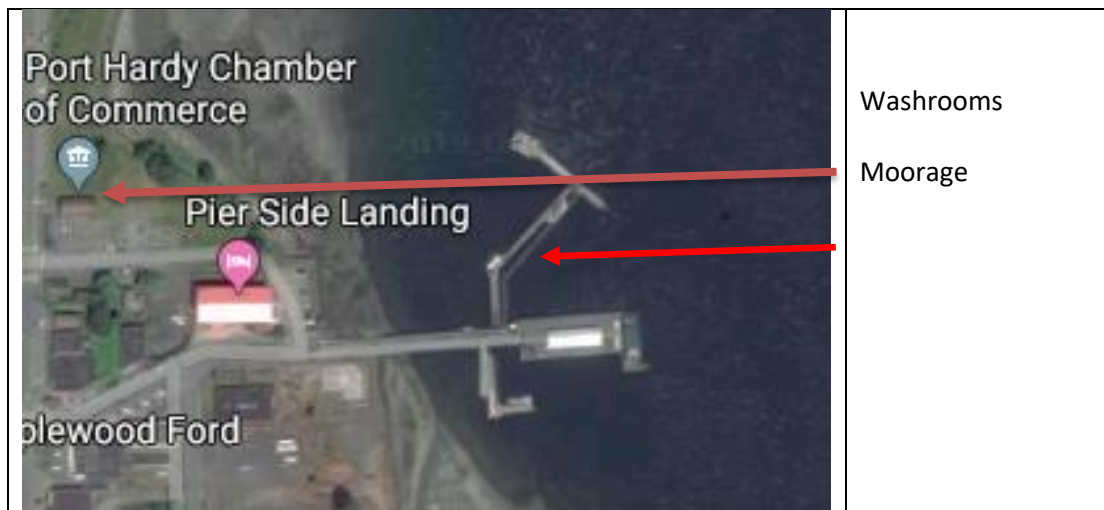
Sailing Distance: 28.7 nm

Start Time: EARLY Departure from docks due to tides – latest 0730. You can watch the start at the entrance to the cove on either the east or west side.

Special Note: In Port Hardy, hopefully the Royal Canadian Mounted Police will be on hand in full red Serge to welcome every boat and deal with any indiscretions that have not made it to the protest room yet. They are usually very cooperative and love posing for photo ops.

Finish: The finish is in Hardy Bay off the Seagate Pier in downtown Port Hardy. The Sprinter Van will be on station on the pier. With the onshore breeze in the afternoon, this is a great place for viewing panic spinnaker takedowns as the boats finish.

Moorage: The T-Floats are located at the bottom of Granville Street. If the wind is up like it was in 2017, the fleet will be directed to the inner basin where boats will raft with the fishing fleet. Very Limited 30amp power is available on the T-Floats, so please bring a splitter and share power.



Facilities: Fuel is available at [The Quarterdeck Marina](#), located adjacent to the Fisherman's Floats.

Washrooms are available at the Port Hardy Chamber of Commerce.

The Port Hardy Airport is approximately a 10-minute drive located south of town. Follow this link for [Flights to and from Vancouver, Nanaimo and Victoria are available.](#)

Accommodations: Follow this [link to information on accommodations in Port Hardy.](#)

Awards Reception: 1100 -1400hrs Awards and a luncheon will be held at the Port Hardy Community Centre, 7400 Columbia Street, Port Hardy. Lunch must be pre-ordered using the information sent to skippers on April 25th in an e-mail. 628 children will be submitting art for you to judge, and we look forward to your support in making this exciting. In addition a First Nations welcome and Childrens dance will be performed.

Other Notes: Stock up on provisions here. The Winter Harbour General Store has lots of beer and rum, and limited canned/boxed foods. However, the next stop for provisioning for fresh supplies will be Ucluelet. As this is customarily the crew change port from inside crew to outside crew, it can be a busy stop. Enjoy and prepare for traversing the Holberg and Winter Harbour Logging Roads.

Leg 6 – Port Hardy to Winter Harbour **(Seriously, YOU are give way, backup and move off the road)**



Date: Friday June 9

Driving Distance to Winter Harbour: 75 kilometers/47 miles allow 2 hours or more with an RV

Driving Distance to Holberg (Scarlet Ibis): 50 Kilometers 1 hour to 1 ½ hours

Driving Distance Holberg to Winter Harbour: 25 Kilometers/15 miles 1 hour

Sailing Distance: 69.40 nautical miles

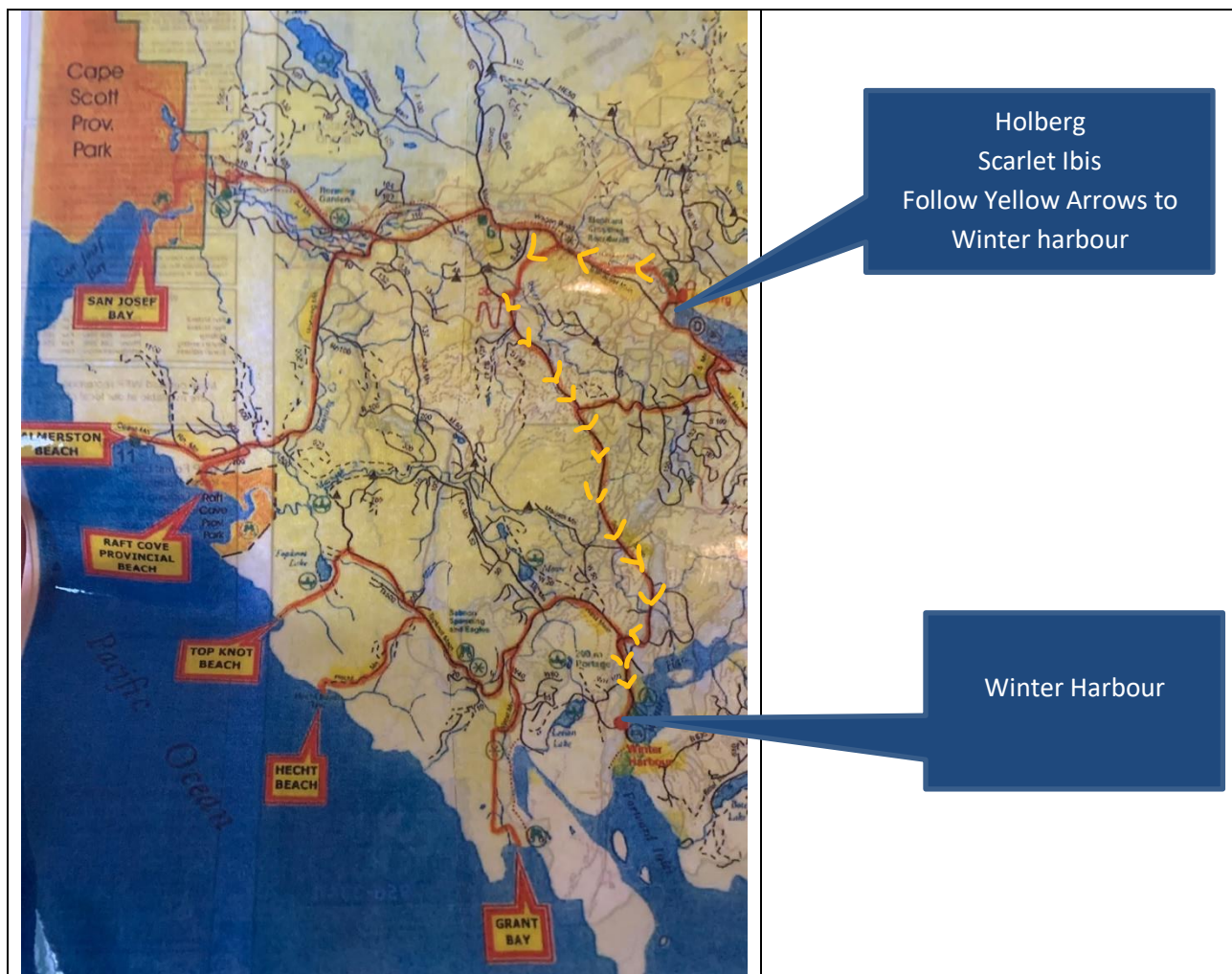
Start: 0900 hrs. The start line is off the Seagate Pier. We may have over 600 school children there for the count down.

Special Notes: This is the first offshore leg and takes sailors around the top of the Vancouver Island, past Cape Scott to the open Pacific. The Nahwitti bar has a reputation for being one of the nastiest bits of water on the west coast when wind opposes tide. It lived up to its reputation in 2015.

The logging road into Winter Harbour has been somewhat improved. This is mostly because Cape Scott Provincial Park saw a huge increase in visitors during the pandemic. Having said this, please keep the following in mind.

- Keep track of pullouts as you drive in, and the road gets narrower, if you meet a logging truck they have the right of way, and you need to get out of their way.
- You must have good tires and appropriate tire changing kit.
- You must make sure your spare tires are properly inflated.
- You must make sure you can remove the lug nuts on your wheels.

- AAA/BCAA will come out, eventually, but it is NOT COVERED. It is expensive, and it is the weekend, folks will be fishing!!!
- If you have an emergency, locate the nearest telephone pole. It will have a number on it. The lower the number, the closer you are to Highway 19. The higher the number, the closer you are to Holberg or having passed Holberg, Winter harbour. There is a lot of traffic on the road into Holberg, up to the Elephant Crossing, and folks will stop and give you a hand. If you have an issue on the Winter Harbour Road, traffic is lighter, but someone will be by. Try and find a pullout if you can so you don't block the road. Stay in your vehicle, watch for wildlife.
- Tire repairs are done in Port Hardy, and since we are in traveling on the weekend, the tire shops will be closed. If you have a simple puncture, come, and find Rob/Kelly or Morgan at Qualicum Rivers Fishing Resort in Winter Harbour where we usually have simple repair kits.
- Telephone pole number 200 is where hikers "hang" their shoes after completing the Cape Scott hike.
- A convoy for the shore crews will be organised (find Suzanne) at the junction of Winter Harbour Road and Highway 19 to Holberg and stop at the [Scarlet Ibis](#), Vancouver Islands most remote pub. The convoy will leave the pub after lunch on June 9. Come and enjoy a great lunch with your fellow roadies. If you don't want to join the convoy, we recommend that you buddy up with one other roadie in case of a flat tire or breakdown.
- Whether you join the convoy or not, make sure you leave lots of room between vehicles. If you do have to use a pullout, most only accommodate one car.
- The map below is from Holberg to Winter Harbour. Follow the yellow arrows. Do not take the alternate route as it is very busy with logging trucks and passes through the log dump where heavy equipment is working.



Finish: The race committee will be on station at the Kains Island lighthouse (Quatsino Light station), about 5 nautical miles by boat from Winter Harbour. As such there is no opportunity to watch the boats finish.

The boats will arrive in the harbour passing Greenwood Point, the green flashing light at the entrance to the harbour. This is the only port where moorage is not centralized. The three main docks are located as follows, the Outpost, the first set of docks encountered transiting in from Greenwood Point, Winter Harbour Marina and RV park is next, followed by the government dock just north of Qualicum Rivers Fishing Lodge.



Facilities: Fuel, fishing supplies, alcohol and limited canned goods are available at the [Outpost](#), for boats and for vehicles, both diesel and petrol. The full-time population here is less than 20 people, however the summer population grows dramatically as this is one of the hot spots for offshore salmon, lingcod and halibut fishing. There is limited shore power, very limited showers, and toilets. Boats should plan on being relatively self-sufficient here. “The Pub” is located at the picnic table on the deck at the Outpost. The boardwalk runs along the shore for about a mile.

Accommodations: Winter Harbour has many small rentals and rooms available. [Follow this link for accommodations and campsites.](#)

Food: There are no restaurants/takeout in town, closest is the Scarlet Ibis in Holberg via the logging road, about a 30–45-minute drive. Great food and awesome beer by our beer sponsor, Longwood Brewery. Follow this link to the [Scarlet Ibis](#) Vancouver Islands most remote pub.

North Sails Awards BBQ & Reception: June 10 - The awards presentation will take place at the Winter Harbour Marina . The folks of Winter Harbour and North Sails have organized a BBQ beginning at 1500hrs, with proceeds going to local improvements in town. Please bring the exact change if possible. Cost will be 30.00 and it looks like a rotisserie spit of beef and BBQ chicken for dinner.



Leg 7 – Winter Harbour to Ucluelet (YOU – CLUE – LET)

“The Mark Livingstone Leg”

This leg is dedicated to the memory of Mark Livingstone who was instrumental in ensuring the safety of the fleet through his work with MCTS (Tofino Coast Guard Radio, now Prince Rupert Coast Guard Radio) and the Ucluelet RCMSAR Unit 38. In your race package will be a short note on the RCMSAR unit in Ucluelet and a request for a donation to support their volunteer operations.

This is a long journey for the Road Crews, you should allow at least 10 hours to travel from Winter harbour to Ucluelet. The government of BC has indicated that the Kennedy Hill Road expansion, located about ½ hour before the turnoff to Ucluelet on Highway 4, is to be complete in time for the race.

A great place to stop for a break is “Goats on the Roof” in Coombs BC. There is a fantastic Italian Restaurant, ice cream, gelato, farmers market, cheese, smoked fish, beach items. Remember most of this journey is without cell phone coverage. Maybe buddy up for the drive.

Date: Sunday June 11

Driving Distance: 550 kilometers/342 miles Allow 10 hours including stops for food and fuel.

Sailing Distance: 138.10 nautical miles

Finish: The finish is located at the Amphitrite Lighthouse. Depending on wind and weather boats can be done in 10 hours or take close to 48 hours.... The Race Committee Sprinter Van will be parked just inside the gates near the vacant light keepers house.

Moorage: Moorage is provided in the municipal marina “boat basin” near downtown, courtesy of the District of Ucluelet. Boats drawing more than ten feet will be required to tie up at the outer float in the same area, the local name for this dock is “The Japanese dock or floats”.

If the Japanese Docks are full, deep draft boats may be directed to the 52 Steps Dock to assure deep moorage. Unfortunately, there are no services on the 52 Steps Dock. We believe there are actually 51 steps.



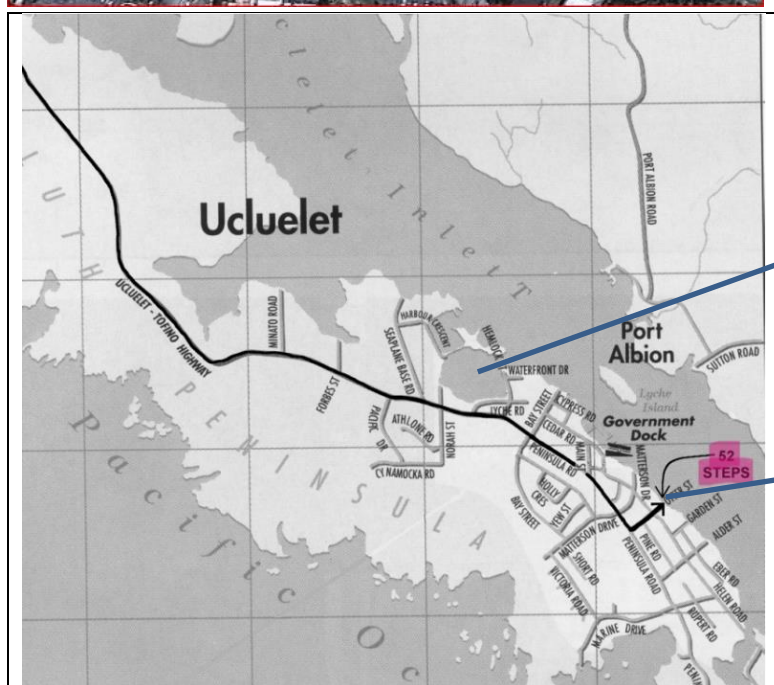
Waters Edge Resort

Moorage 10-foot draft
+ (Japanese Dock)

All other drafts

Harbour Office

Shower Code 512



Inner Basin, main
moorage

52 Steps Dock
Location, foot of Otter
Street

Accommodations: [The Waters Edge Resort](#), directly across from the boat basin is a long-time sponsor of the race, can't wait for that hot tub on the deck! [More accommodations and services can be found by following this link.](#)



Facilities: Shore power, water, fuel, showers, laundry, shopping all available and close by. **Ucluelet Shower Access Code 512.** The local grocery store is the CO-OP. There is so much to see and do here, or just up the road at Pacific Rim National Park. Relax on white sand beaches or try your hand at surfing.

Special Notes: School children will be involved in the start on June 14th at Amphitrite Lighthouse.

Welcome Reception & dinner: A BBQ dinner and awards presentation has been organized by the Ucluelet Chamber of Commerce at the New Community Hall on Tuesday June 13 beginning at 1600 hrs for pre-dinner beverages. RCMSAR 38 will be on hand with the beer garden, dinner will begin around 1700hrs and awards to start around 1800hrs. Order your tickets on-line through your skipper as per the e-mail sent on April 25th. There will be Salmon and a Vegetarian option. Cost is \$41.50

Leg 8 –Ucluelet to Victoria

Date: Wednesday June 14

Driving Distance: 295 Kilometers/183 miles 4 hours driving time

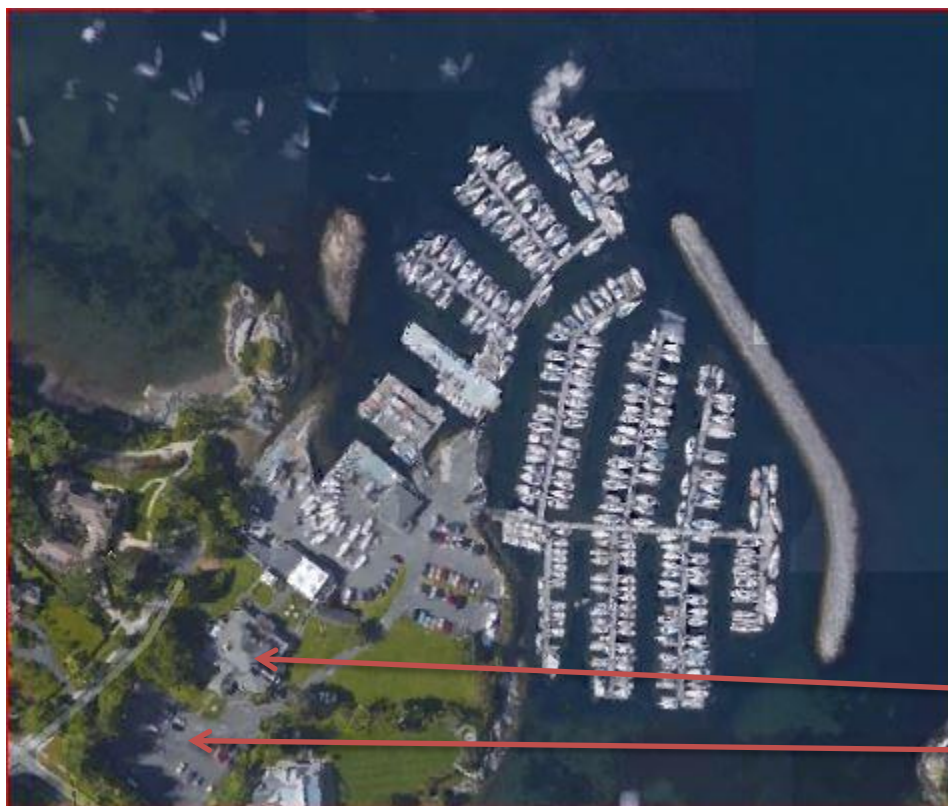
Sailing Distance: 97 nautical miles

Start: 1000 hrs. The start line is in the vicinity of finish line. Excellent spectator viewing is available at Amphitrite Point, the start is directly in front of the lighthouse. RCMSAR 38 and a Navy vessel will be on station as the pin at the end of the start line.

Finish: The finish will be at Clover Point. The race committee will be on station in the Sprinter on the point. There is excellent spectator viewing from the parking lot at the point.

Moorage: Complimentary moorage is provided at Royal Victoria Yacht Club. Moorage may also be available at the causeway floats in front of the Parliament Buildings downtown Victoria by the Greater Victoria Harbour Authority at the going rate at the skipper's expense. If you decide to park at the causeway floats, be sure to make a reservation using this link [Reservation & Moorage Booking - GVHA](#)

Parking: Motor homes may NOT park overnight in the parking lot of Royal Victoria Yacht Club. Here is a link to [Parking in Victoria](#).



RVYC Clubhouse

Car Parking

Use of Royal Victoria Yacht Club Facilities: We are privileged to use all the facilities at the Yacht Club. The restaurant and bar accept all major credit cards, cash, and chits if you are member or have reciprocal privileges. Please dress accordingly.

Awards Presentation and Dinner: An awards presentation and dinner will take place at Royal Victoria Yacht Club (3475 Ripon Rd. Victoria, BC) on June 15. Bar opens at 1530hrs, dinner at 1700hrs and awards start around 1800hrs.

Leg 9 –Victoria to Nanaimo

Date: Friday June 16

Driving Distance: 115 Kilometers/72 miles 1 ¾ hours drive time.

Sailing Distance: 60.40 nautical miles

Start: 11:00 hrs. The race committee will be on station at Clover Point, same location as the previous finish.

Finish: The finish will be off the WE Mills Pier in Nanaimo Harbour, the same area as the starting line that the fleet departed on June 3rd. Excellent spectator viewing from the Pier.



Finish Time: Boats have until 1400 on June 17 to finish this leg.

Final Awards: After 14 full days of racing, we know most folks are ready to head home. Having said that, it is wonderful that so many choose to stay and salute the winners in each division.

Saturday, June 17 at 1100hrs **OR** 1 hour after the last boat arrives at the dock if boats are still on the racecourse. Three sounds of the air horn will announce that awards will begin in 15 minutes. Awards will take place in the general vicinity of the Mobile Race Headquarters in the Round About at the head of the W.E. Mills Pier where it all began a short 342 hours before.

Please ask your skipper to turn in their Yellow Brick Transponder before heading home.